

GENERAL NOTES

- PROVIDE RACEWAY AND WIRING TO ALL DEVICES, FIXTURES, AND EQUIPMENT INDICATED ON THE CONTRACT DRAWINGS. THE DRAWINGS INDICATE PARTIAL RACEWAY AND WIRING REQUIREMENTS TO HELP CLARIFY DESIGN INTENT. WHERE RACEWAY AND/OR WIRING IS NOT INDICATED FOR DEVICES, FIXTURES, OR EQUIPMENT THE ARRANGEMENT, GROUPING, AND ROUTING SHALL BE PROVIDED IN ACCORDANCE WITH THE 2008 EDITION OF THE NATIONAL ELECTRICAL CODE AND IN ACCORDANCE WITH METHODS OUTLINED IN THE CONTRACT SPECIFICATIONS AND DRAWINGS.
- RACEWAY LOCATIONS INDICATED ON PLAN ARE APPROXIMATE. THE CONTRACTOR SHALL FIELD VERIFY EXISTING CONDITIONS AND INSTALL RACEWAYS ACCORDINGLY. CONCEAL RACEWAY AS MUCH AS POSSIBLE OUT OF FINISHED SPACES. KEEP SURFACE RACEWAY TO A MINIMUM. COORDINATE SURFACE RACEWAY ROUTINGS WITH ENGINEER BEFORE ROUGH-IN.
- ALL PENETRATIONS THROUGH FLOORS, WALLS, AND PARTITIONS SHALL BE PROVIDED IN CONDUIT OR EMT AND SHALL BE 2 HOUR FIRESTOPPED IN ACCORDANCE WITH NFPA 70 (2011 EDITION) AND THE INTERNATIONAL BUILDING CODE (2012 EDITION). FIRESTOP SYSTEMS SHALL HAVE BEEN TESTED TO UL STANDARD 1479 AND BE LISTED IN THE LATEST UL FIRE RESISTANCE DIRECTORY (e.g., SYSTEMS CAJ1235 AND WL1152). SEE PENETRATION FIRESTOP DETAILS 1 AND 2 ON DRAWING E1.1. WHERE A SPECIFIC INSTALLATION DOES NOT MEET THE REQUIREMENTS OF REFERENCED DETAILS, CONTRACTOR SHALL SUBMIT PROPOSED FIRESTOP SYSTEM TO ENGINEER FOR REVIEW.
- RACEWAYS SHALL BE EMT WITH COMPRESSION TYPE FITTINGS UNLESS NOTED OR DETAILED OTHERWISE. SET-SCREW AND/OR INDENTOR TYPE FITTINGS SHALL NOT BE USED.
- CORE DRILL FLOORS/CEILINGS IN BUILDINGS AS REQUIRED TO INSTALL VERTICAL RACEWAYS. THE CONTRACTOR SHALL PROCURE THE SERVICES OF AN X-RAY TESTING COMPANY TO X-RAY AREAS WHERE CORE DRILLING IS REQUIRED. THE CONTRACTOR SHALL ONLY CORE DRILL IN AREAS OF FLOOR SLABS WHERE DAMAGE WILL NOT OCCUR TO EXISTING RACEWAYS AND/OR STRUCTURAL STEEL. THE CONTRACTOR SHALL USE A DRY DRILLING METHOD/BIT.
- ONLY RACEWAYS AND WIRING THAT SPECIFICALLY SERVE DEVICES AND/OR EQUIPMENT LOCATED IN A STAIRWELL MAY BE INSTALLED IN THE STAIRWELL AS REQUIRED PER THE INTERNATIONAL BUILDING CODE (2012 EDITION).
- INSTALL ELECTRICAL SYSTEMS WITHOUT INTERFERING WITH DUCTS, PIPES, STRUCTURAL STRUCTURAL MEMBERS, OR OTHER SYSTEMS.
- PROVIDE ADDITIONAL SUPPORTS FOR CONTROL PANELS, RACEWAYS, AND OTHER EQUIPMENT WHEREVER THE BUILDING STRUCTURE IS NOT SUITABLE FOR DIRECT MOUNTING.
- PROVIDE ACCESS DOORS WHERE REQUIRED TO PROVIDE ACCESS TO CONCEALED PULL AND JUNCTION BOXES.
- INSTALL FIRE ALARM SYSTEM DEVICES AS INDICATED IN INSTALLATION DETAILS SHOWN ON DRAWING E1.2, AS APPLICABLE. WHERE DEVICE INSTALLATIONS ARE NOT APPLICABLE TO THESE DETAILS, THE CONTRACTOR SHALL INSTALL DEVICES USING MANUFACTURER'S RECOMMENDATIONS AND INDUSTRY STANDARDS IN ACCORDANCE WITH THE NATIONAL ELECTRICAL CODE 2011.
- EQUIPMENT AND DEVICE LOCATIONS INDICATED ON PLAN ARE APPROXIMATE. THE CONTRACTOR SHALL LOCATE EQUIPMENT AND DEVICES SO AS NOT TO CONFLICT WITH EXISTING CEILING AND WALL MOUNTED EQUIPMENT, FIXTURES, AND DEVICES. THE CONTRACTOR SHALL MAINTAIN U.L. LISTED SPACINGS FOR DEVICES WHEN DETERMINING THEIR EXACT MOUNTING LOCATION.
- PROVIDE ACCESS DOORS WHERE REQUIRED TO CONCEAL RACEWAYS ABOVE NON-ACCESSIBLE CEILINGS AND WHERE REQUIRED TO PROVIDE ACCESS TO CONCEALED PULL AND JUNCTION BOXES.
- PAINTING: WHERE RACEWAYS ARE INDICATED TO BE PAINTED, THE CONTRACTOR SHALL PAINT RACEWAYS WITH A PREMIUM-GRADE PAINT (PITTSBURGH, DEVCO OR EQUAL), COLOR TO MATCH EXISTING WALL AND/OR CEILING FINISH. APPLY THREE COATS MINIMUM UNLESS PRIOR APPROVED BY THE ARCHITECT/ENGINEER.
- SPLICING: CONNECT CONDUCTORS ASSOCIATED WITH THE FIRE ALARM SYSTEM THAT ARE TERMINATED, SPLICED, OR INTERRUPTED TO TERMINAL BLOCKS. MARK EACH TERMINAL IN ACCORDANCE WITH THE WIRING DIAGRAMS OF THE SYSTEM. MAKE ALL CONNECTIONS WITH APPROVED CRIMP-ON TERMINAL SPADE LUGS, PRESSURE-TYPE TERMINAL BLOCKS, OR PLUG CONNECTORS. SOLDER AND/OR WIRE NUTS SHALL NOT BE USED.
- CABLE TAPS: CABLE TAPS WILL ONLY BE ALLOWED IN ADDRESSABLE TYPE SIGNALING LINE CIRCUITS; CABLE TAPS SHALL NOT BE PROVIDED IN HARDWIRE TYPE INITIATING DEVICE CIRCUITS AND NOTIFICATION APPLIANCE CIRCUITS. MOST NOTIFICATION APPLIANCES HAVE BOTH INCOMING AND OUTGOING CONNECTION TERMINALS - WITH PROPER PLANNING THERE SHOULD BE NO NEED TO TAP A NOTIFICATION APPLIANCE CIRCUIT. USE NUMBERED TERMINAL STRIPS IN JUNCTION, PULL OR OUTLET BOXES, CABINETS AND/OR EQUIPMENT ENCLOSURES WHERE ANY CIRCUIT TAP IS MADE. SOLDER AND/OR WIRE NUTS SHALL NOT BE USED.
- CUTTING, DRILLING, AND PATCHING: PROVIDE CHASES, SLOTS, AND OPENINGS IN EXISTING BUILDING COMPONENTS TO ALLOW FOR ELECTRICAL INSTALLATIONS. PERFORM CUTTING, DRILLING, FITTING, AND PATCHING REQUIRED TO:
 - INSTALL EQUIPMENT, MATERIALS, AND RACEWAYS IN EXISTING STRUCTURES.
 - REMOVE AND REPLACE DEFECTIVE WORK THAT DOES NOT CONFORM TO REQUIREMENTS OF THE CONTRACT DOCUMENTS.
 - UPON WRITTEN INSTRUCTIONS FROM THE ARCHITECT/ENGINEER, UNCOVER AND RESTORE WORK TO PROVIDE FOR ARCHITECT/ENGINEER OBSERVATION OF CONCEALED WORK.

PROTECT EXISTING STRUCTURES, FURNISHINGS, FINISHES, MECHANICAL SYSTEMS, AND ELECTRICAL SYSTEMS WHILE PERFORMING CUTTING, DRILLING, FITTING, AND PATCHING.

PATCH EXISTING SURFACES AND BUILDING COMPONENTS USING NEW MATERIALS THAT MATCH EXISTING MATERIALS. PATCHING SHALL BE PERFORMED BY EXPERIENCED INSTALLERS.
- COORDINATE ALL REQUIRED OUTAGES TO EXISTING ELECTRICAL SERVICES AND FIRE ALARM SYSTEM WITH DENNIS GALLAGHER OF USC MAINTENANCE (PHONE NUMBER 917-0340) AND TODD GRIFFIN OF USC HEALTH & SAFETY (PHONE NUMBER 212-8775).

FIRE ALARM SYMBOL LEGEND

■	EXISTING ELECTRICAL PANELBOARD.	Ⓧ	DUCT SMOKE DETECTOR INSTALLED IN EXISTING HVAC DUCT. COORDINATE LOCATIONS WITH EXISTING CONDITIONS. PROVIDE A "CONTROL" TYPE AIU TO SHUTDOWN AIR HANDLING UNIT WHEN A GENERAL ALARM OCCURS - PROVIDE AN ISOLATION RELAY IF CONTACT RATING OF AIU IS NOT PROPERLY RATED TO INTERFACE WITH CONTROL SYSTEM OF AIR HANDLING UNIT. CONTROL WIRING FOR SHUT DOWN OF AIR HANDLING UNIT FAN SHALL BE PROVIDED BY THE DIVISION 16 CONTRACTOR.
Ⓧ	JUNCTION BOX WITH SCREW COVER.	Ⓧ	COMBINATION REMOTE INDICATING LIGHT AND TEST STATION FOR DUCT AND SPOT-TYPE SMOKE DETECTORS, WALL MOUNTED.
Ⓧ	JUNCTION BOX WITH SCREW COVER, WALL MOUNTED.	Ⓧ	VISIBLE-ONLY (STROBE) ALARM UNIT, CEILING MOUNTED. NUMBER INDICATES MINIMUM STROBE CANDELA VALUE. TYPICALLY, MOUNT ALARM UNIT IN ACCORDANCE WITH DETAIL 5 ON SHEET E1.2. ALARM UNITS SHOWN ON PLAN TO BE CONNECTED TO EXPOSED (EXP) EMT/CONDUIT OR WIREMOLD (WM) TYPE RACEWAY SHALL BE SURFACE MOUNTED ON A CUSTOM SURFACE BOX FURNISHED BY THE ALARM UNIT MANUFACTURER.
▬	EXISTING COMMUNICATIONS BACKBOARD.	Ⓧ	VISIBLE-ONLY (STROBE) ALARM UNIT, WALL MOUNTED. NUMBER INDICATES MINIMUM STROBE CANDELA VALUE. TYPICALLY, MOUNT ALARM UNIT IN ACCORDANCE WITH DETAIL 6 ON SHEET E1.2. WHERE OBSTRUCTIONS WILL NOT ALLOW FOR THIS, COORDINATE ALTERNATE MOUNTING ARRANGEMENT WITH THE ARCHITECT/ENGINEER. ALARM UNITS SHOWN ON PLAN TO BE CONNECTED TO EXPOSED (EXP) EMT/CONDUIT OR WIREMOLD (WM) TYPE RACEWAY SHALL BE SURFACE MOUNTED ON A CUSTOM SURFACE BOX FURNISHED BY THE ALARM UNIT MANUFACTURER.
➔	RJ-31X PHONE OUTLET (PROVIDE ADI PART NUMBER MO-RJ31X, ADI PHONE NUMBER 1-803-754-9289). MOUNT OUTLETS INSIDE OF FACP CABINET.	Ⓧ	AUDIBLE-ONLY (SPEAKER) ALARM UNIT, CEILING MOUNTED. TYPICALLY, MOUNT ALARM UNIT IN ACCORDANCE WITH DETAIL 5 ON SHEET E1.2. ALARM UNITS SHOWN ON PLAN TO BE CONNECTED TO EXPOSED (EXP) EMT/CONDUIT OR WIREMOLD (WM) TYPE RACEWAY SHALL BE SURFACE MOUNTED ON A CUSTOM SURFACE BOX FURNISHED BY THE ALARM UNIT MANUFACTURER. CONCEAL CONDUIT/BOX IN GRID CEILINGS.
▬	CONTROL PANEL, SURFACE MOUNTED, TYPE AS NOTED ON PLAN.	Ⓧ	AUDIBLE-ONLY (SPEAKER) ALARM UNIT, WALL MOUNTED. TYPICALLY, MOUNT ALARM UNIT IN ACCORDANCE WITH DETAIL 6 ON SHEET E1.2. WHERE OBSTRUCTIONS WILL NOT ALLOW FOR THIS, COORDINATE ALTERNATE MOUNTING ARRANGEMENT WITH THE ARCHITECT/ENGINEER. ALARM UNITS SHOWN ON PLAN TO BE CONNECTED TO EXPOSED (EXP) EMT/CONDUIT OR WIREMOLD (WM) TYPE RACEWAY SHALL BE SURFACE MOUNTED ON A CUSTOM SURFACE BOX FURNISHED BY THE ALARM UNIT MANUFACTURER.
▬	CONTROL PANEL, FLUSH MOUNTED, TYPE AS NOTED ON PLAN.	Ⓧ	COMBINATION AUDIBLE/VISIBLE (SPEAKER/STROBE) ALARM UNIT, CEILING MOUNTED. NUMBER INDICATES MINIMUM STROBE CANDELA VALUE. MOUNT ALARM UNIT IN ACCORDANCE WITH DETAIL 5 ON SHEET E1.2. ALARM UNITS SHOWN ON PLAN TO BE CONNECTED TO EXPOSED (EXP) EMT/CONDUIT OR WIREMOLD (WM) TYPE RACEWAY SHALL BE SURFACE MOUNTED ON A CUSTOM SURFACE BOX FURNISHED BY THE ALARM UNIT MANUFACTURER.
AIU	ADDRESSABLE INTERFACE UNIT (AIU). SURFACE MOUNT UNIT IN A NEMA-1 ENCLOSURE WITH SCREW COVER.	Ⓧ	COMBINATION AUDIBLE/VISIBLE (SPEAKER/STROBE) ALARM UNIT, WALL MOUNTED. NUMBER INDICATES MINIMUM STROBE CANDELA VALUE. TYPICALLY, MOUNT ALARM UNIT IN ACCORDANCE WITH DETAIL 6 ON SHEET E1.2. WHERE OBSTRUCTIONS WILL NOT ALLOW FOR THIS, COORDINATE ALTERNATE MOUNTING ARRANGEMENT WITH THE ARCHITECT/ENGINEER. ALARM UNITS SHOWN ON PLAN TO BE CONNECTED TO EXPOSED (EXP) EMT/CONDUIT OR WIREMOLD (WM) TYPE RACEWAY SHALL BE SURFACE MOUNTED ON A CUSTOM SURFACE BOX FURNISHED BY THE ALARM UNIT MANUFACTURER.
Ⓧ	ISOLATION RELAY TO INTERFACE ADDRESSABLE INTERFACE UNIT WITH OTHER CONTROLS. PROVIDE A NEMA 1 ENCLOSURE TO HOUSE RELAY.	Ⓧ	EXISTING CEILING TYPE NOTATION ("EXP" = EXPOSED STRUCTURE; "GYP" = GYP BOARD; ALL OTHER UNMARKED SPACES HAVE GRID CEILINGS WITH ACOUSTICAL TILES).
Ⓧ	MANUAL PULL STATION, WALL MOUNTED. TYPICALLY, MOUNT STATION IN ACCORDANCE WITH DETAIL 1 ON SHEET E1.2 UNLESS A SPECIFIC INSTALLATION DETAIL IS CALLED OUT ON PLAN. STATIONS SHOWN ON PLAN TO BE CONNECTED TO EXPOSED (EXP) EMT/CONDUIT OR WIREMOLD (WM) TYPE RACEWAY SHALL BE MOUNTED ON A CUSTOM SURFACE BOX.		
Ⓧ	SPOT-TYPE SMOKE DETECTOR, CEILING MOUNTED. TYPICALLY, MOUNT DETECTOR IN ACCORDANCE WITH DETAIL 5 ON SHEET E1.2 UNLESS A SPECIFIC INSTALLATION DETAIL IS CALLED OUT ON PLAN. DETECTORS SHOWN ON PLAN TO BE CONNECTED TO EXPOSED (EXP) EMT/CONDUIT OR WIREMOLD (WM) TYPE RACEWAY SHALL BE SURFACE MOUNTED ON A WIREMOLD #V5737 OR #V5739 BOX.		
Ⓧ	SPOT-TYPE SMOKE DETECTOR, WALL MOUNTED. TYPICALLY, MOUNT DETECTOR IN ACCORDANCE WITH DETAIL 6 ON SHEET E1.2. WHERE OBSTRUCTIONS WILL NOT ALLOW FOR THIS, COORDINATE ALTERNATE MOUNTING ARRANGEMENT WITH THE ARCHITECT/ENGINEER. DETECTORS SHOWN ON PLAN TO BE CONNECTED TO EXPOSED (EXP) EMT/CONDUIT OR WIREMOLD (WM) TYPE RACEWAY SHALL BE SURFACE MOUNTED ON A WIREMOLD #V5737 OR #V5739 BOX.		
Ⓧ	SPOT-TYPE HEAT DETECTOR, COMBINATION 135-DEGREE FIXED TEMPERATURE AND RATE-OF-RISE, CEILING MOUNTED. TYPICALLY, MOUNT DETECTOR IN ACCORDANCE WITH DETAIL 5 ON SHEET E1.2. UNLESS A SPECIFIC INSTALLATION DETAIL IS CALLED OUT ON PLAN. DETECTORS SHOWN ON PLAN TO BE CONNECTED TO EXPOSED (EXP) EMT/CONDUIT OR WIREMOLD (WM) TYPE RACEWAY SHALL BE SURFACE MOUNTED ON A WIREMOLD #V5737 OR #V5739 BOX.		
Ⓧ	SPOT-TYPE HEAT DETECTOR, SAME AS ABOVE EXCEPT COMBINATION 190-DEGREE FIXED TEMPERATURE AND RATE-OF-RISE.		
Ⓧ	SPOT-TYPE HEAT DETECTOR, COMBINATION 135-DEGREE FIXED TEMPERATURE AND RATE-OF-RISE, WALL MOUNTED. TYPICALLY, MOUNT DETECTOR IN ACCORDANCE WITH DETAIL 6 ON SHEET E1.2. WHERE OBSTRUCTIONS WILL NOT ALLOW FOR THIS, COORDINATE ALTERNATE MOUNTING ARRANGEMENT WITH THE ARCHITECT/ENGINEER. DETECTORS SHOWN ON PLAN TO BE CONNECTED TO EXPOSED (EXP) EMT/CONDUIT OR WIREMOLD (WM) TYPE RACEWAY SHALL BE SURFACE MOUNTED ON A WIREMOLD #V5737 OR #V5739 BOX.		

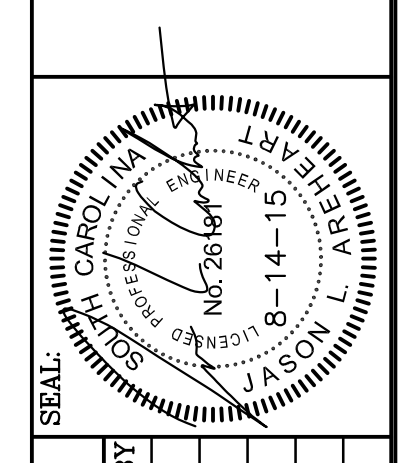
ELECTRICAL ABBREVIATIONS

AFF	ABOVE FINISHED FLOOR
AFG	ABOVE FINISHED GRADE
BFG	BELOW FINISHED GRADE
EXP	EXPOSED (CONDUIT OR CEILING)
FACP	FIRE ALARM CONTROL PANEL
GYP	GYP BOARD (CEILING)
J-BOX	JUNCTION BOX
NEC	NATIONAL ELECTRICAL CODE
WM	WIREMOLD SURFACE METAL RACEWAY
WP	WEATHERPROOF

ELECTRICAL DRAWING INDEX

E1.0	FIRE ALARM SYMBOL LEGEND AND SCHEDULES
E1.1	FIRE ALARM SINGLE-LINE AND FIRESTOP DETAILS
E1.2	FIRE ALARM INSTALLATION DETAILS
E2.1	FIRST FLOOR FIRE ALARM PLAN
E2.2	SECOND FLOOR FIRE ALARM PLAN
E2.3	THIRD FLOOR FIRE ALARM PLAN
E2.4	FOURTH FLOOR FIRE ALARM PLAN
E2.5	FIFTH FLOOR FIRE ALARM PLAN

CAMPUS PLANNING
AND CONSTRUCTION
COLUMBIA, SC 29908



SEAL:	J. A. J. L.
CHECKED BY:	J. A. J. L.
DATE:	14 AUG 15
DRAWN BY:	ZES
DATE:	
DESCRIPTION:	
DATE:	
DESCRIPTION:	
DATE:	
DESCRIPTION:	
DATE:	
DESCRIPTION:	
DATE:	
DESCRIPTION:	

STATE PROJECT NO. H27-1851
PROJECT TITLE: BARNWELL COLLEGE FIRE ALARM

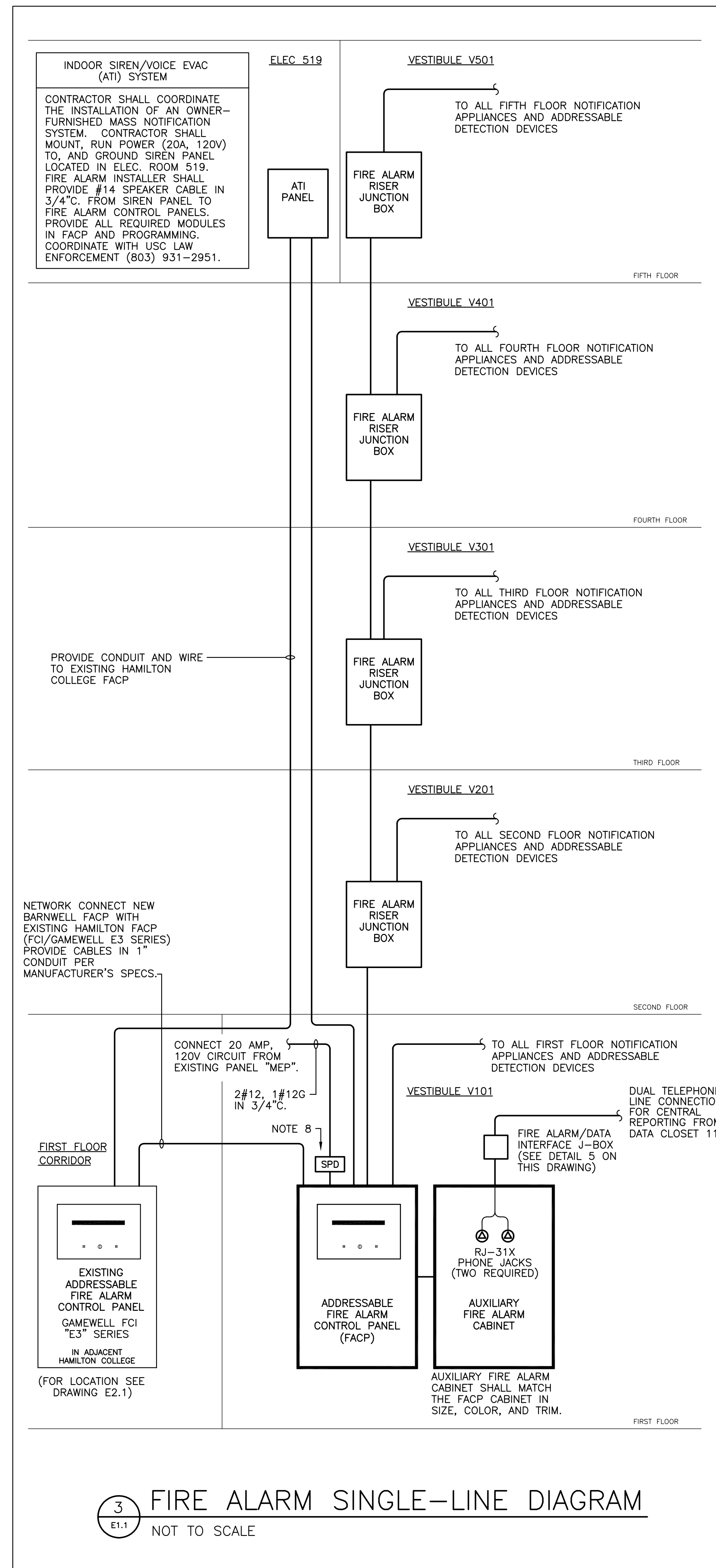
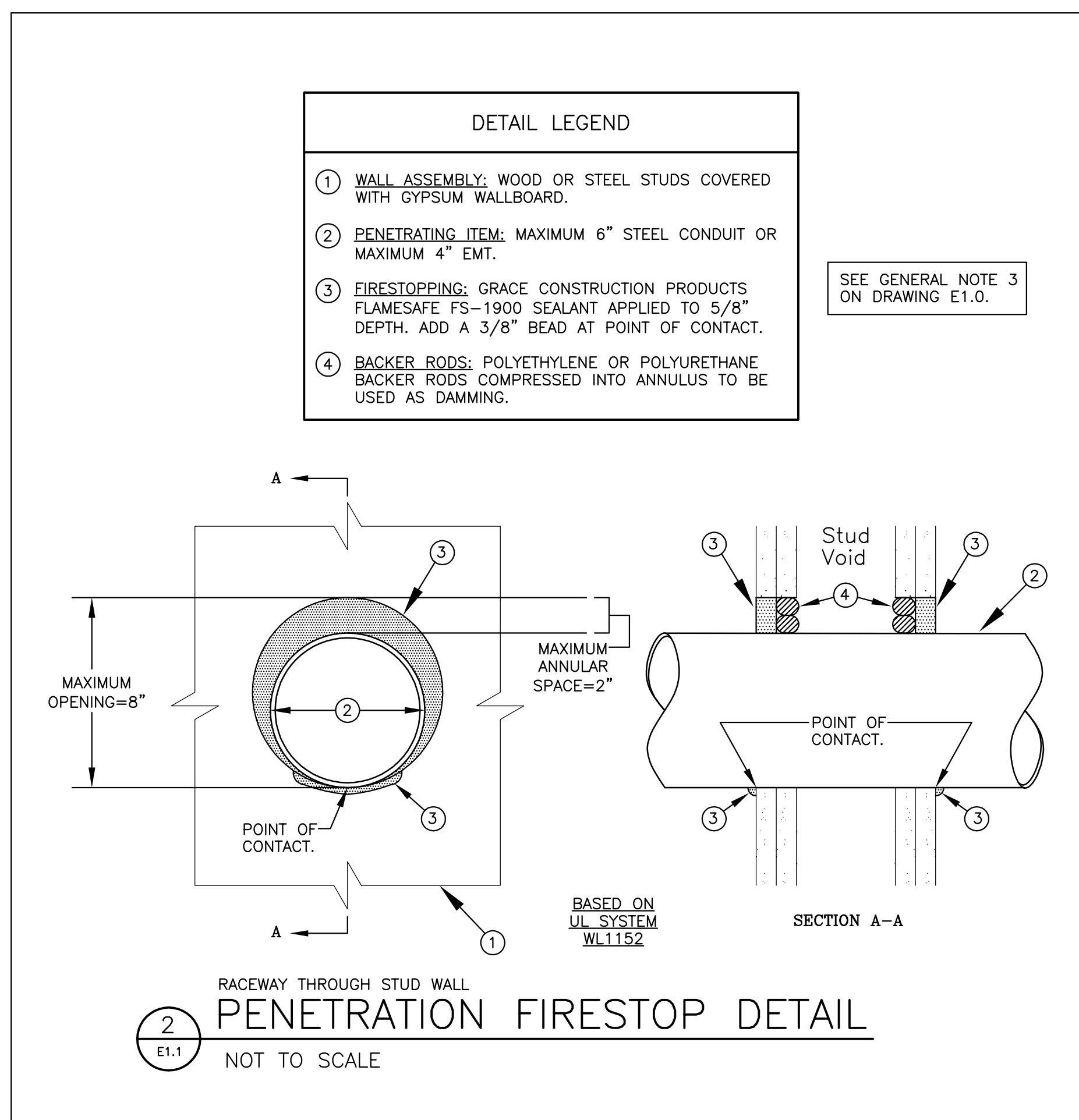
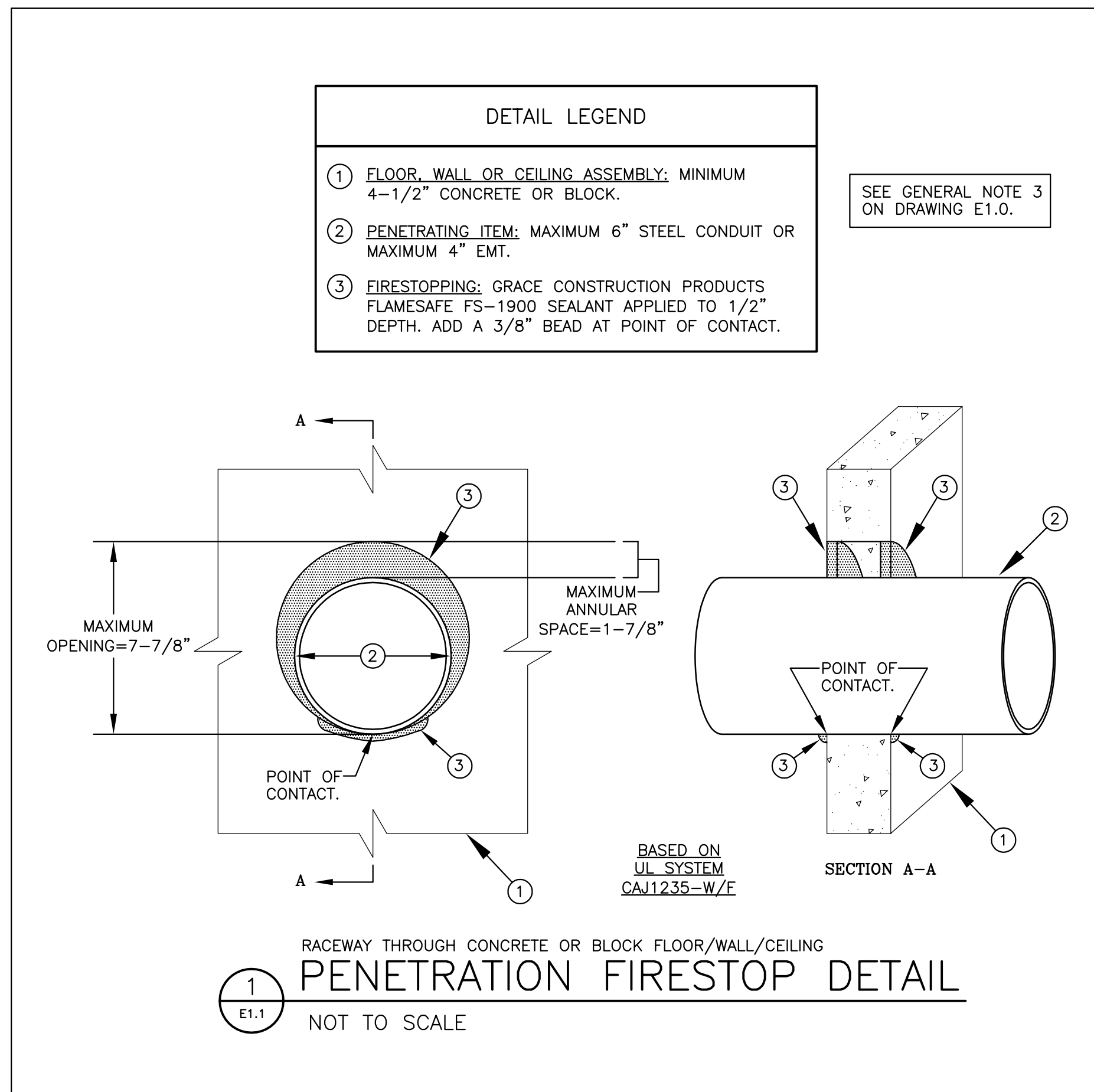
University of South Carolina



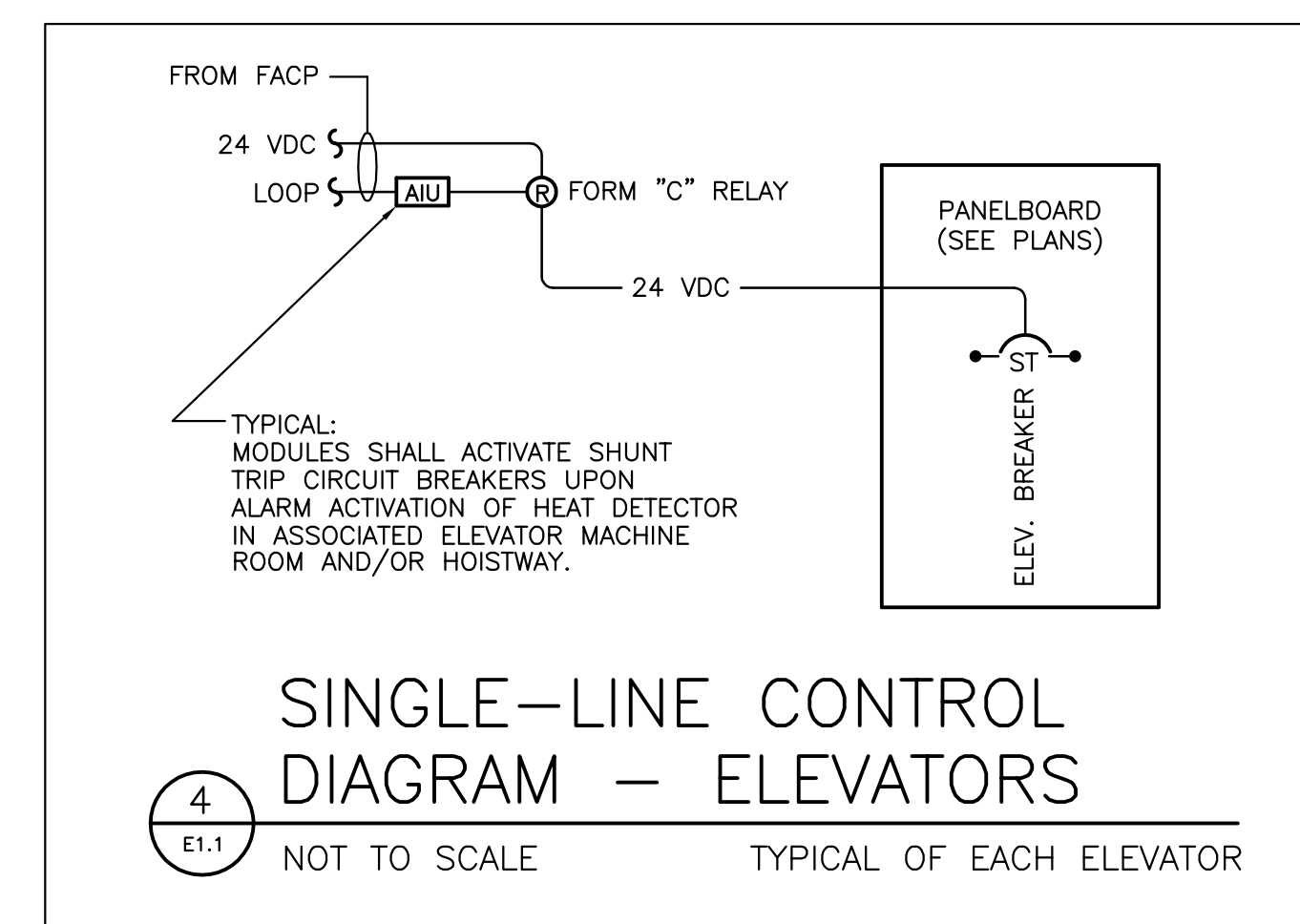
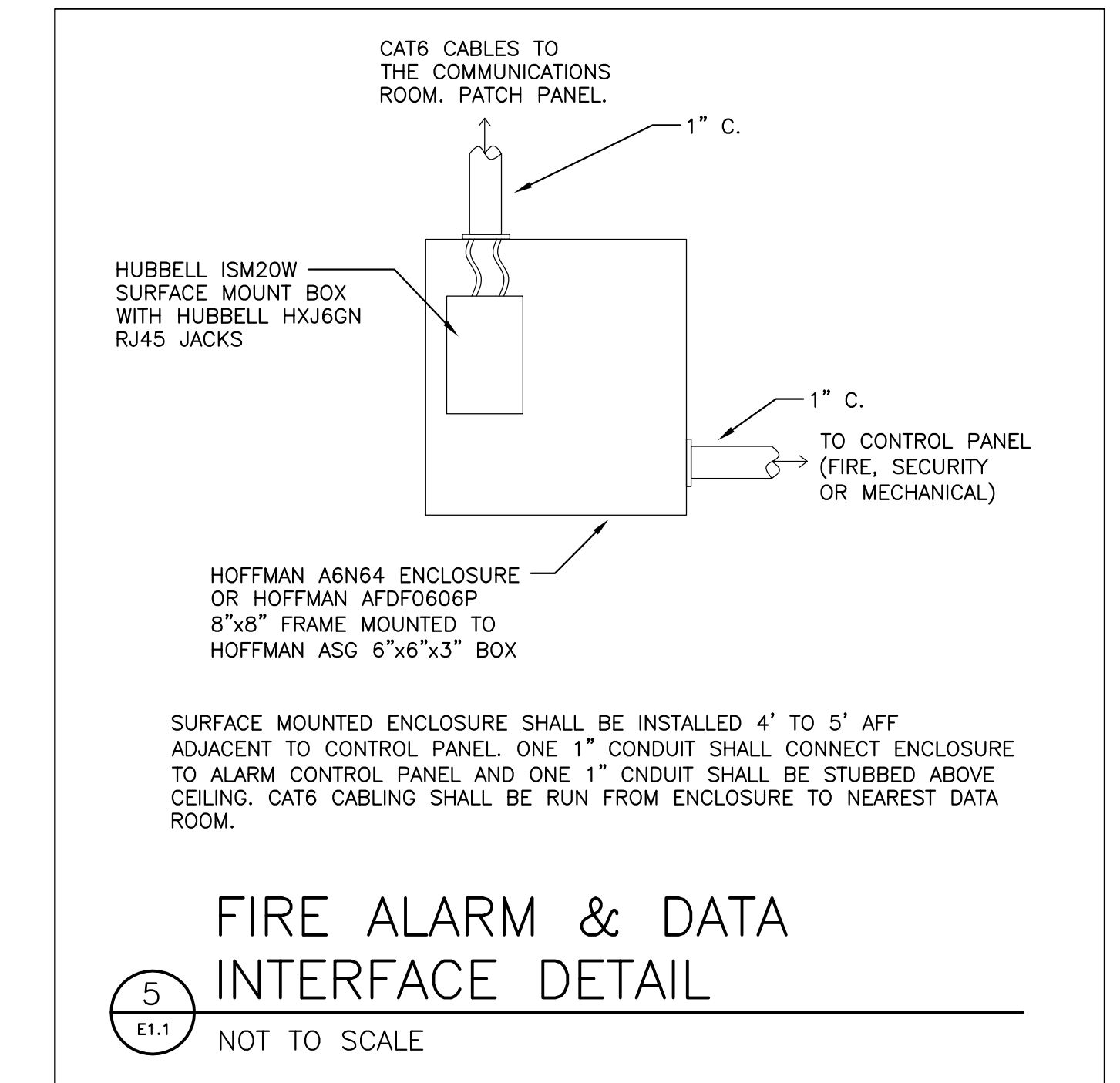
BEA BELKA ENGINEERING ASSOCIATES, INC.

7 CLUSTERS COURT, SUITE 201
COLUMBIA, SOUTH CAROLINA 29210
(803) 731-0650 fax (803) 731-2880
EMAIL: cestringfield@bellsouth.net

US21207 SHEET:
E1.0
1 OF 8
SHEET IN SET:
1 OF 8



- GENERAL FIRE ALARM SYSTEM NOTES**
- FURNISH SHOP DRAWINGS FROM THE FIRE ALARM MANUFACTURER INDICATING ALL WIRING FOR DETECTION AND NOTIFICATION CIRCUITS. INCLUDE EQUIPMENT TYPES AND LOCATIONS, RACEWAY SIZES, NUMBER AND TYPES OF WIRES/CABLES, DIAMETERS OF CABLES/WIRES AND COLOR CODING FOR EACH CIRCUIT TYPE. SHOP DRAWINGS SHALL BE PROVIDED ON 24" X 36" (D-SIZE) PRINTS.
 - ALL STROBES SHALL BE SYNCHRONIZED. ALL AUDIBLE NOTIFICATION DEVICES SHALL BE TEMPORAL CODED AND SHALL BE SYNCHRONIZED. PROVIDE BATTERY CALCULATIONS TO VERIFY THE SECONDARY POWER SUPPLY HAS ADEQUATE CAPACITY IN ACCORDANCE WITH NFPA 72.
 - SPlicing: CONNECT CONDUCTORS ASSOCIATED WITH THE FIRE ALARM SYSTEM THAT ARE TERMINATED, SPLICED, OR INTERRUPTED TO TERMINAL BLOCKS. MARK EACH TERMINAL IN ACCORDANCE WITH THE WIRING DIAGRAMS OF THE SYSTEM. MARK ALL CONNECTIONS WITH APPROVED CRIMP-ON TERMINAL SPADE LUGS, PRESSURE-TYPE TERMINAL BLOCKS, OR PLUG CONNECTORS. SOLDER AND/OR WIRE NUTS SHALL NOT BE USED. PROVIDE GREENLITE CABLE ACCESSORY CORPORATION GTB-SERIES, BREAKOFF TYPE TERMINAL BLOCKS OR PRIOR APPROVED EQUAL (PHONE: 626-575-6263).
 - PROVIDE THREE SETS OF OPERATION AND MAINTENANCE MANUALS FOR THE FIRE ALARM SYSTEM. PROVIDE A BINDER FOR EACH SET.
 - PROVIDE A COMPLETE FIRE ALARM TEST IN ACCORDANCE WITH NFPA 72. ALL SMOKE DETECTORS SHALL BE TESTED WITH AN APPROVED AERASOL SMOKE PRODUCT. FOR DUCT DETECTORS, IN ADDITION TO THE TESTING DESCRIBED ABOVE, TEST DUCT SMOKE DETECTORS THAT USE SAMPLING TUBES TO ENSURE THAT THEY WILL WORK PROPERLY. SAMPLE THE AIRSTREAM IN THE DUCT USING A METHOD ACCEPTABLE TO THE MANUFACTURER OR IN ACCORDANCE WITH THEIR PUBLISHED INSTRUCTIONS. PROVIDE A WRITTEN RECORD OF THE INSPECTIONS, TESTS, AND DETAILED TEST RESULTS IN THE FORM OF A TEST LOG. SUBMIT LOG UPON THE SATISFACTORY COMPLETION OF TESTS.
 - PROVIDE 4 HOURS OF TRAINING FOR TROUBLE-SHOOTING AND MAINTENANCE OF THE FIRE ALARM SYSTEM. SCHEDULE TRAINING WITH OWNER.
 - PROVIDE FOR THREE SITE VISITS BY A FIRE ALARM SYSTEM TECHNICIAN AFTER PROJECT COMPLETION TO ADJUST AND/OR REPROGRAM THE FIRE ALARM SYSTEM AS REQUESTED BY THE OWNER.
 - PROVIDE SURGE PROTECTION DEVICE (SPD) (LIEBERT OR EQUAL) ON PRIMARY POWER CIRCUITS FEEDING ALL FIRE ALARM CONTROL PANELS.



BEA BELKA ENGINEERING ASSOCIATES, INC.

7 CLUSTERS COURT, SUITE 201
COLUMBIA, SOUTH CAROLINA 29210
(803) 731-0650 fax (803) 731-2880
EMAIL: cestringfield@bellsouth.net

CAMPUS PLANNING AND CONSTRUCTION COLUMBIA, SC 29208

STATE PROJECT NO. H27-1851

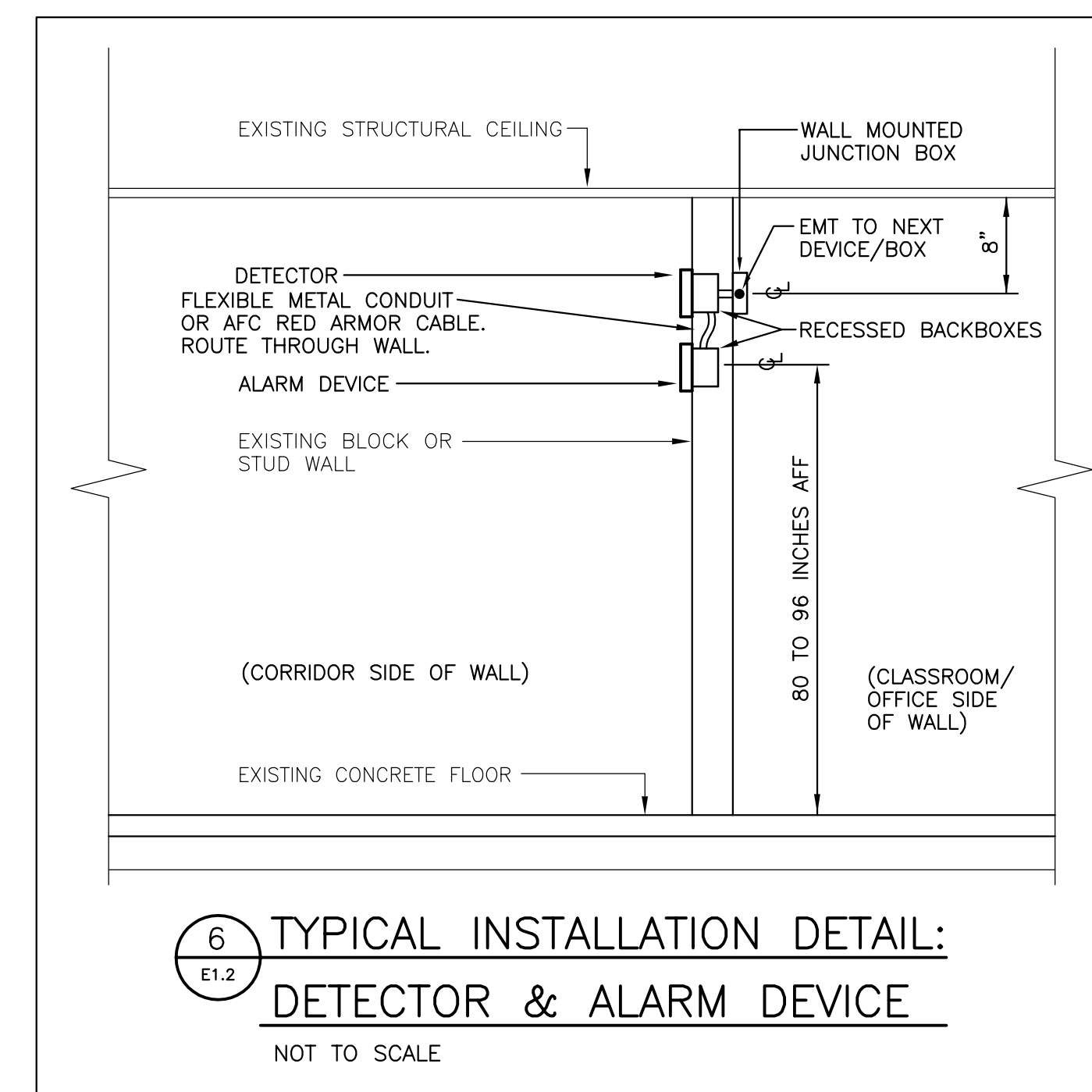
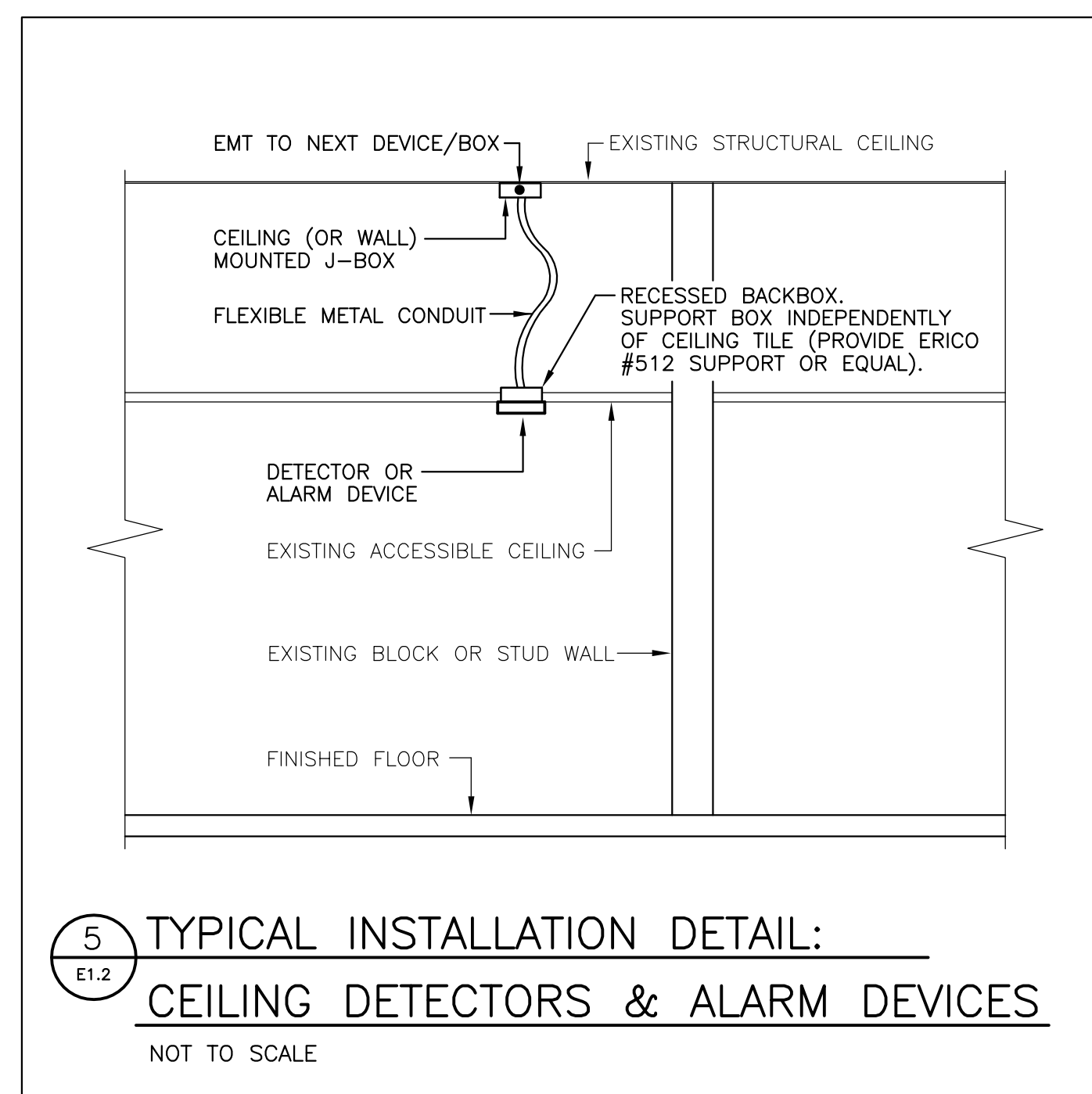
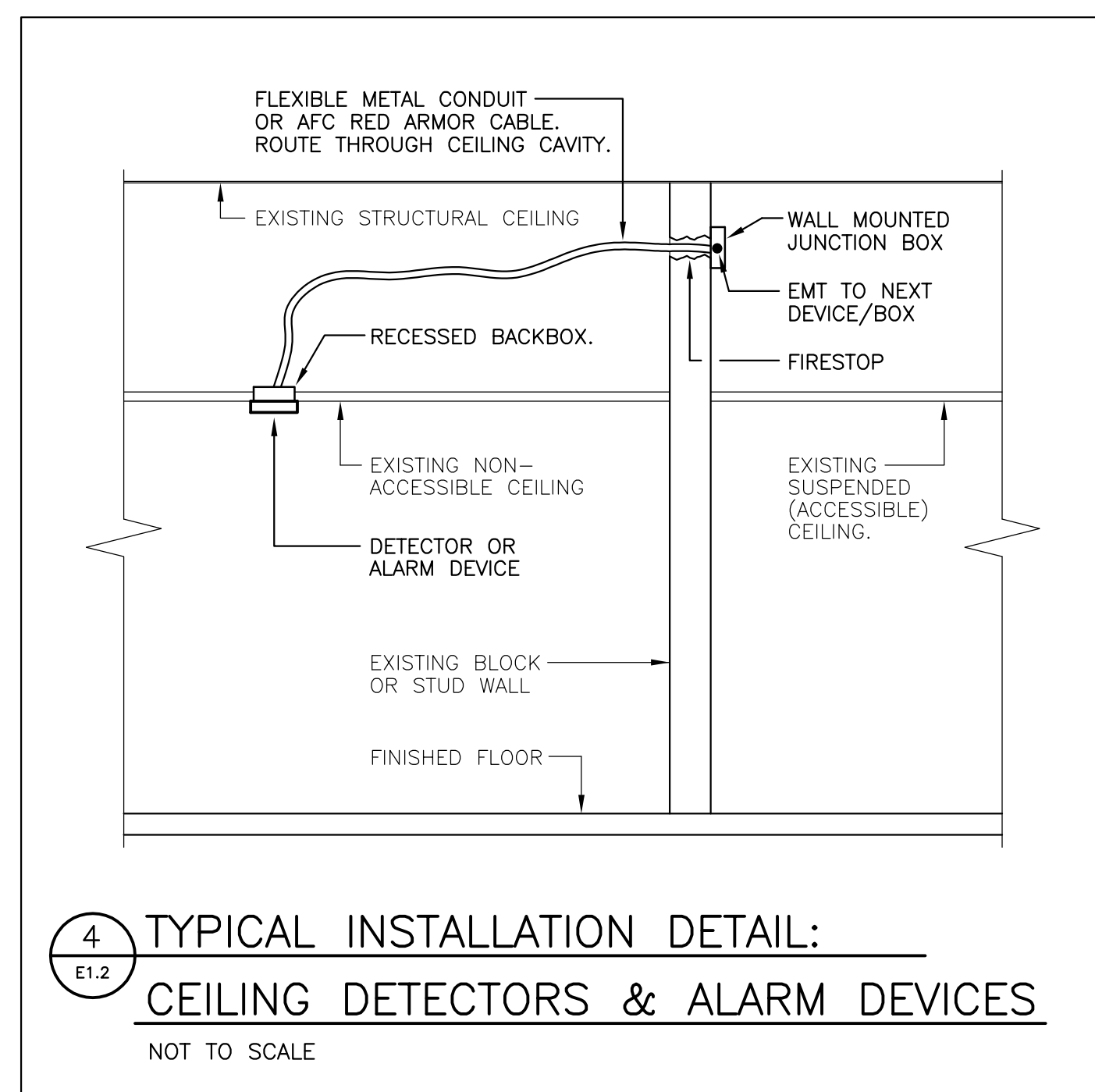
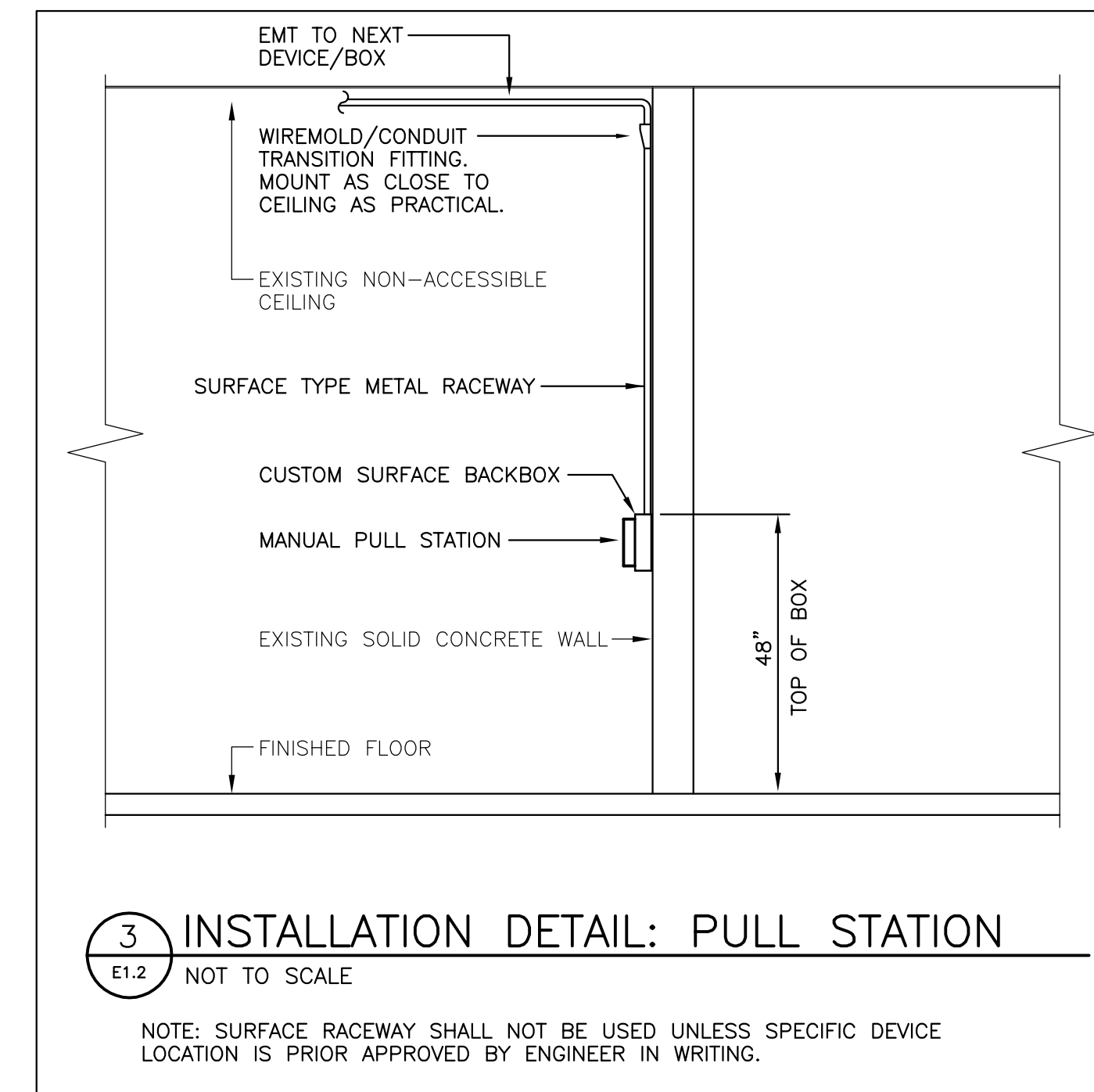
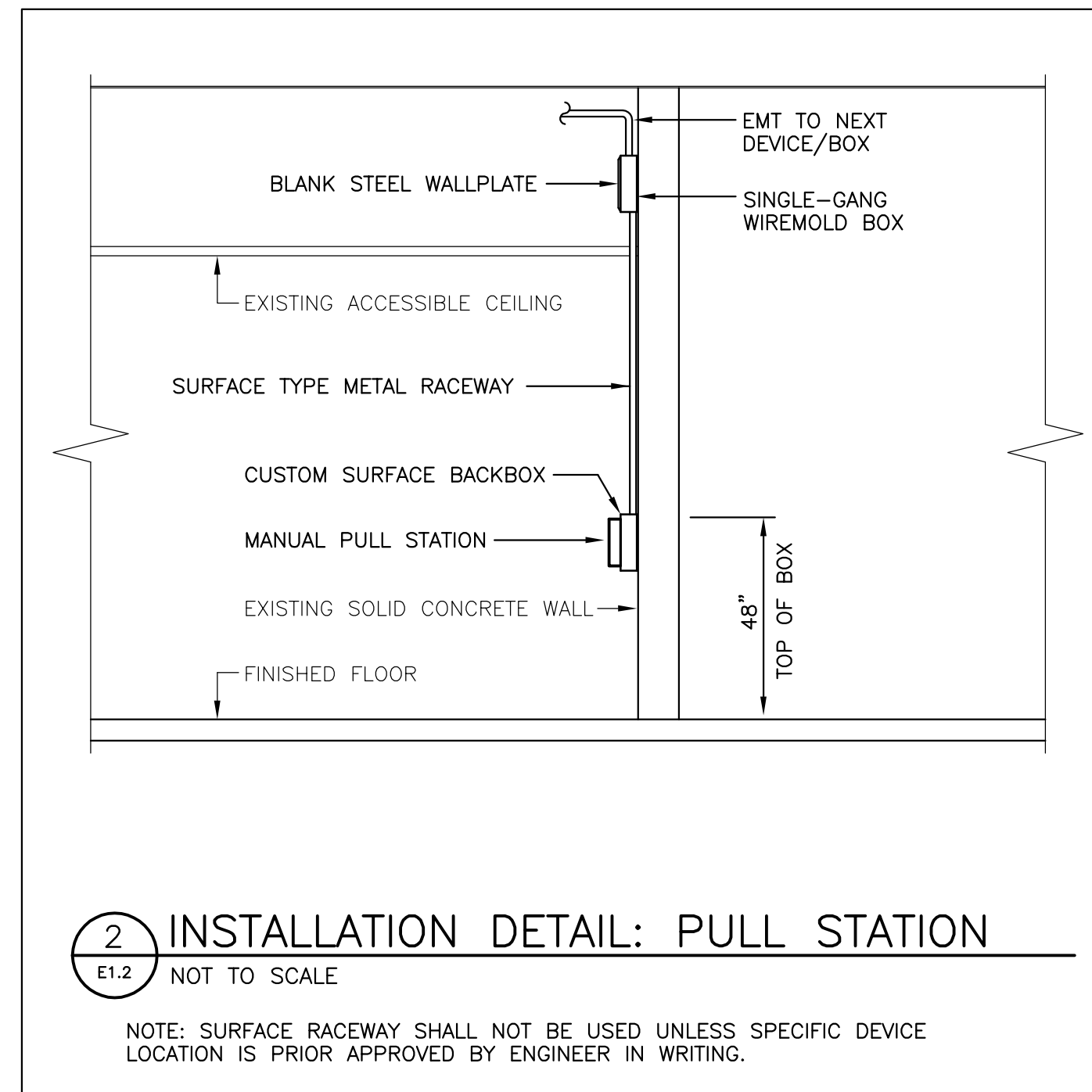
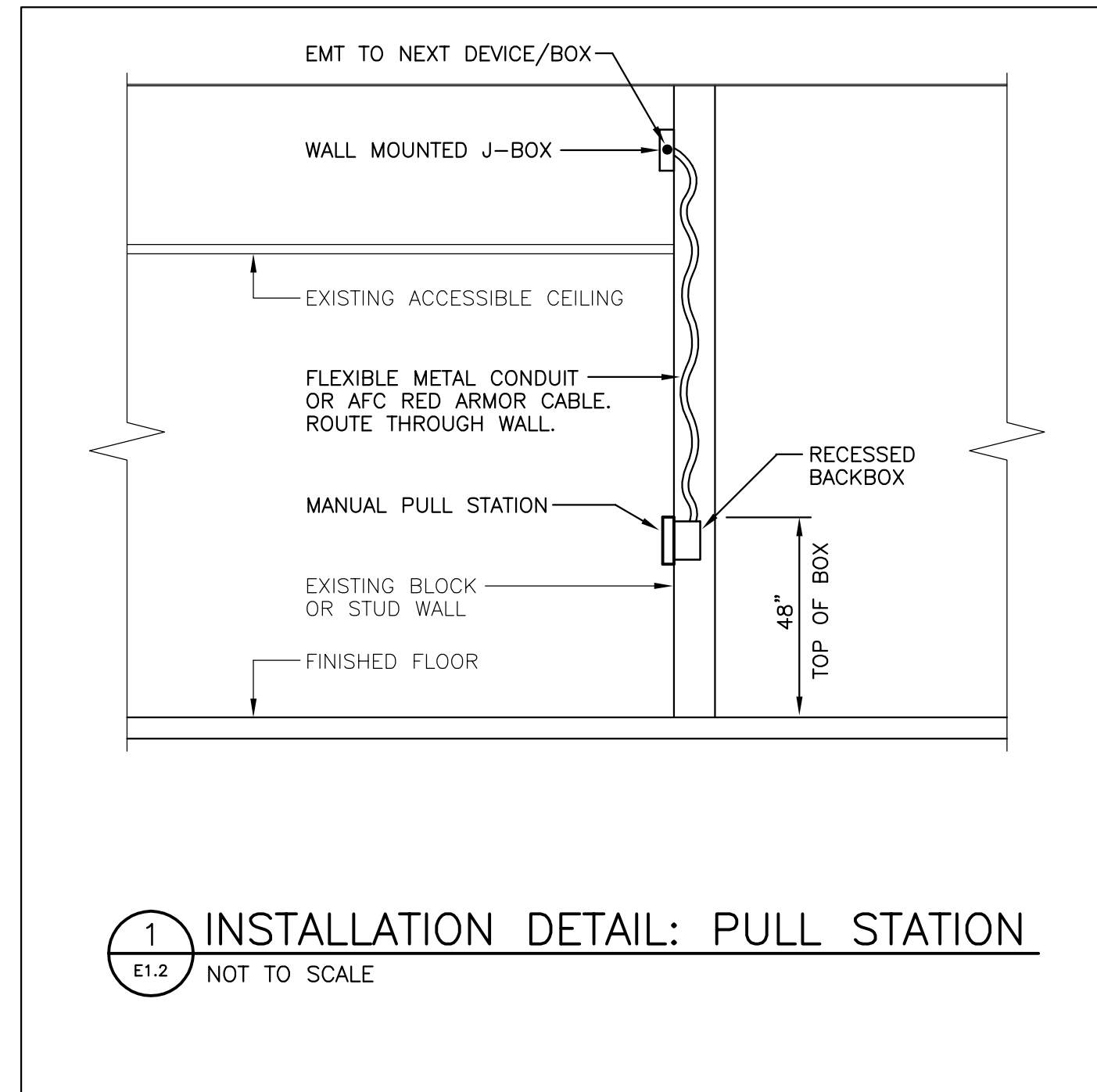
PROJECT TITLE: BARNWELL COLLEGE FIRE ALARM

US21207 SHEET: E1.1

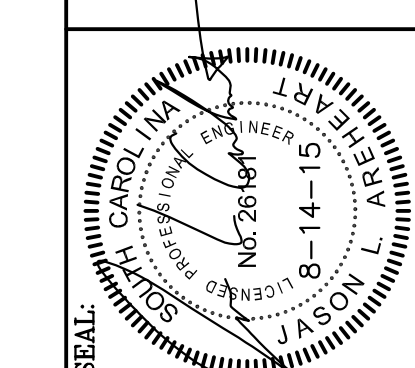
2 OF 8

SHEET IN SET: 2 OF 8

UNIVERSITY OF SOUTH CAROLINA



CAMPUS PLANNING
AND CONSTRUCTION
COLUMBIA, SC 29208

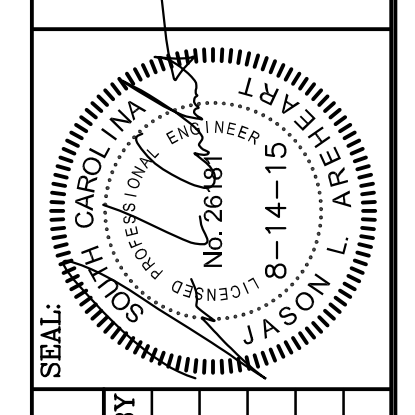


REV.	DESCRIPTION	DATE	ORIG. BY	DRAWN BY	CHECKED BY

STATE PROJECT NO. H27-1851
BUILDING: O18
DRAWING: CPO039502
DATE: 14AUG15
PROJECT TITLE: BARNWELL COLLEGE FIRE ALARM
University of South Carolina

US21207 SHEET: **E1.2**
3 OF 8
SHEET IN SET: 3 OF 8

BEA BELKA ENGINEERING ASSOCIATES, INC.
7 CLUSTERS COURT, SUITE 201
COLUMBIA, SOUTH CAROLINA 29210
(803) 731-0650 fax (803) 731-2880
EMAIL: cestringfield@bellsouth.net



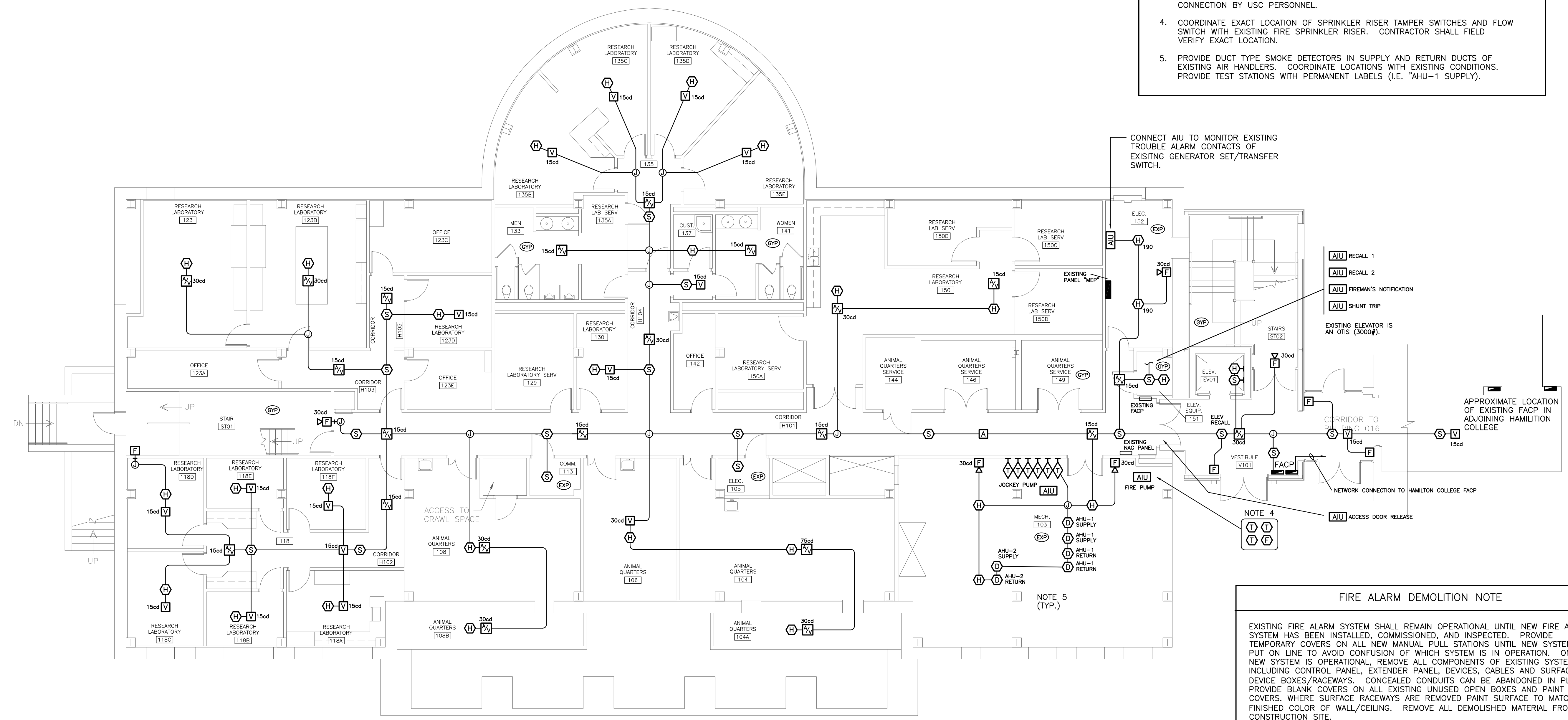
SEAL:	CHECKED BY:	J.L.A.
DRAWING:	DATE:	14AUG15
BUILDING:	ORIG. BY:	
018	DATE:	
REV.	DESCRIPTION:	

STATE PROJECT NO. H27-1851
PROJECT TITLE: BARNWELL COLLEGE FIRE ALARM
University of South Carolina

US21207 SHEET:
E2.1
4 OF 8
SHEET IN SET:
4 OF 8

FIRE ALARM NOTES

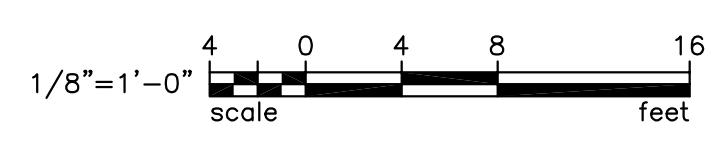
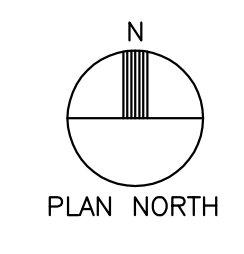
1. PROVIDE TWO "EXACTLY MATCHING" FIRE ALARM CONTROL CABINETS AND SURFACE MOUNT THEM IN THE EXISTING ELECTRICAL ROOM 105 WITH TOPS AT 66 INCHES ABOVE FINISHED FLOOR.
2. PROVIDE ONE 20-AMP RATED SINGLE-POLE CIRCUIT BREAKER IN THE EXISTING PANELBOARD "MEP" TO SERVE THE FIRE ALARM CONTROL PANEL AND AUXILIARY POWER SUPPLIES. PROVIDE A LOCK-OFF HANDLE ACCESSORY FOR THE CIRCUIT BREAKER AND PAINT THE HANDLE OF THE CIRCUIT BREAKER RED. UPDATE THE PANELBOARD DIRECTORY TO INDICATE/DESCRIBE NEW LOAD. PROVIDE TWO #12 THIN CONDUCTORS AND ONE #12 AWG GREEN INSULATED GROUND WIRE IN 3/4" EMT RACEWAY FROM PANELBOARD TO CONTROL CABINETS. CONCEAL RACEWAY ABOVE DROP CEILINGS WHERE APPLICABLE.
3. PROVIDE TWO CATEGORY 6 TWISTED-PAIR COMMUNICATIONS CABLES IN ONE 3/4" EMT RACEWAY FROM THE COMMUNICATIONS BACKBOARD IN CLOSET 113 TO THE FIRE ALARM CONTROL PANEL. COLOR OF CABLES SHALL BE GREEN. CONCEAL RACEWAY ABOVE DROP CEILINGS WHERE APPLICABLE. PROVIDE TWO RJ-31X JACKS IN THE FIRE ALARM CONTROL PANEL AND CONNECT CABLES TO JACKS. LEAVE 8 FEET OF SLACK CABLE IN THE COMMUNICATIONS CLOSET FOR CONNECTION BY USC PERSONNEL.
4. COORDINATE EXACT LOCATION OF SPRINKLER RISER TAMPER SWITCHES AND FLOW SWITCH WITH EXISTING FIRE SPRINKLER RISER. CONTRACTOR SHALL FIELD VERIFY EXACT LOCATION.
5. PROVIDE DUCT TYPE SMOKE DETECTORS IN SUPPLY AND RETURN DUCTS OF EXISTING AIR HANDLERS. COORDINATE LOCATIONS WITH EXISTING CONDITIONS. PROVIDE TEST STATIONS WITH PERMANENT LABELS (I.E. "AHU-1 SUPPLY").



FIRE ALARM DEMOLITION NOTE

EXISTING FIRE ALARM SYSTEM SHALL REMAIN OPERATIONAL UNTIL NEW FIRE ALARM SYSTEM HAS BEEN INSTALLED, COMMISSIONED, AND INSPECTED. PROVIDE TEMPORARY COVERS ON ALL NEW MANUAL PULL STATIONS UNTIL NEW SYSTEM IS PUT ON LINE TO AVOID CONFUSION OF WHICH SYSTEM IS IN OPERATION. ONCE NEW SYSTEM IS OPERATIONAL, REMOVE ALL COMPONENTS OF EXISTING SYSTEM INCLUDING CONTROL PANEL, EXTENDER PANEL, DEVICES, CABLES AND SURFACE DEVICE BOXES/RACEWAYS. CONCEALED CONDUITS CAN BE ABANDONED IN PLACE. PROVIDE BLANK COVERS ON ALL EXISTING UNUSED OPEN BOXES AND PAINT COVERS. WHERE SURFACE RACEWAYS ARE REMOVED PAINT SURFACE TO MATCH FINISHED COLOR OF WALL/CEILING. REMOVE ALL DEMOLISHED MATERIAL FROM CONSTRUCTION SITE.

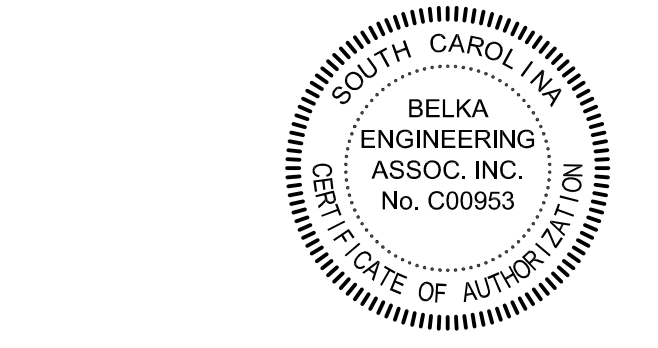
1 FIRST FLOOR FIRE ALARM PLAN
SCALE: 1/8" = 1'-0"



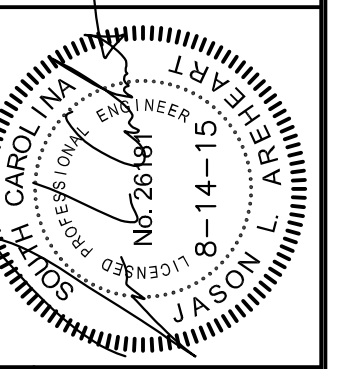
EXISTING CEILING TYPE LEGEND

(EXP)	EXPOSED STRUCTURE
(GYP)	GYPSUM BOARD (HARD) CEILING

ALL OTHER EXISTING CEILINGS ARE GRID WITH REMOVABLE ACOUSTICAL TILES.

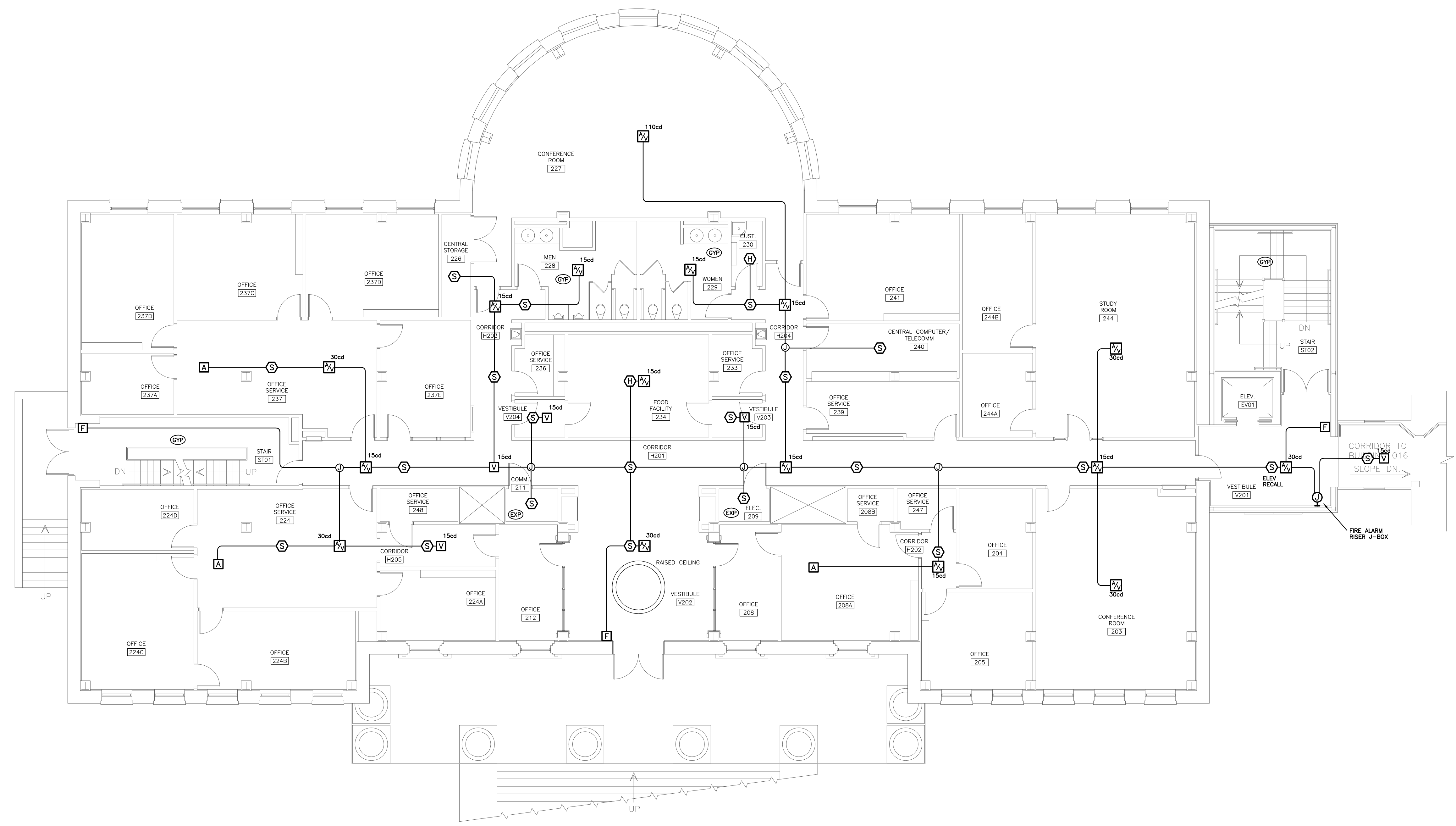


BEA BELKA ENGINEERING ASSOCIATES, INC.
7 CLUSTERS COURT, SUITE 201
COLUMBIA, SOUTH CAROLINA 29210
(803) 731-0650 fax (803) 731-2880
EMAIL: cestringfield@bellsouth.net



FIRE ALARM DEMOLITION NOTE

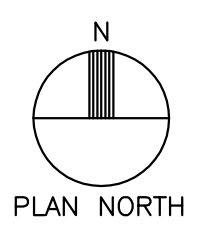
EXISTING FIRE ALARM SYSTEM SHALL REMAIN OPERATIONAL UNTIL NEW FIRE ALARM SYSTEM HAS BEEN INSTALLED, COMMISSIONED, AND INSPECTED. PROVIDE TEMPORARY COVERS ON ALL NEW MANUAL PULL STATIONS UNTIL NEW SYSTEM IS PUT ON LINE TO AVOID CONFUSION OF WHICH SYSTEM IS IN OPERATION. ONCE NEW SYSTEM IS OPERATIONAL, REMOVE ALL COMPONENTS OF EXISTING SYSTEM INCLUDING CONTROL PANEL, EXTENDER PANEL, DEVICES, CABLES AND SURFACE DEVICE BOXES/RACEWAYS. CONCEALED CONDUITS CAN BE ABANDONED IN PLACE. PROVIDE BLANK COVERS ON ALL EXISTING UNUSED OPEN BOXES. PAINT COVERS AND WHERE SURFACE RACEWAYS ARE REMOVED TO MATCH FINISHED COLOR OF WALL/CEILING. REMOVE ALL DEMOLISHED MATERIAL FROM CONSTRUCTION SITE.



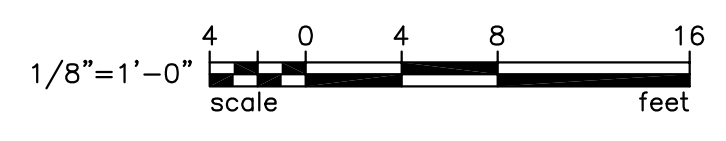
BUILDING:	DRAWING:	DATE:	DRAWN BY:	CHECKED BY:
018	CPO0359502	14AUG15	JLA	JLA
REV:	DESCRIPTION:	DATE:	ORIG. BY:	DRAWN BY:

STATE PROJECT NO. H27-1851
PROJECT TITLE: BARNWELL COLLEGE FIRE ALARM

University of South Carolina



1 SECOND FLOOR FIRE ALARM PLAN
E2.2 SCALE: 1/8" = 1'-0"

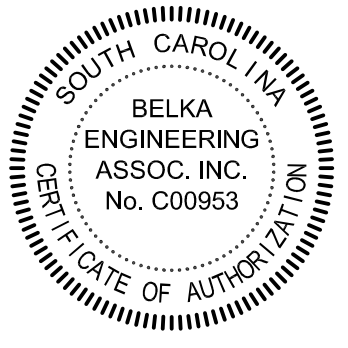


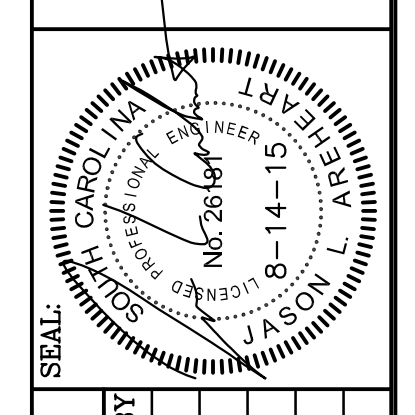
EXISTING CEILING TYPE LEGEND

	EXPOSED STRUCTURE
	GYPSUM BOARD (HARD) CEILING

ALL OTHER EXISTING CEILINGS ARE GRID WITH REMOVABLE ACOUSTICAL TILES.

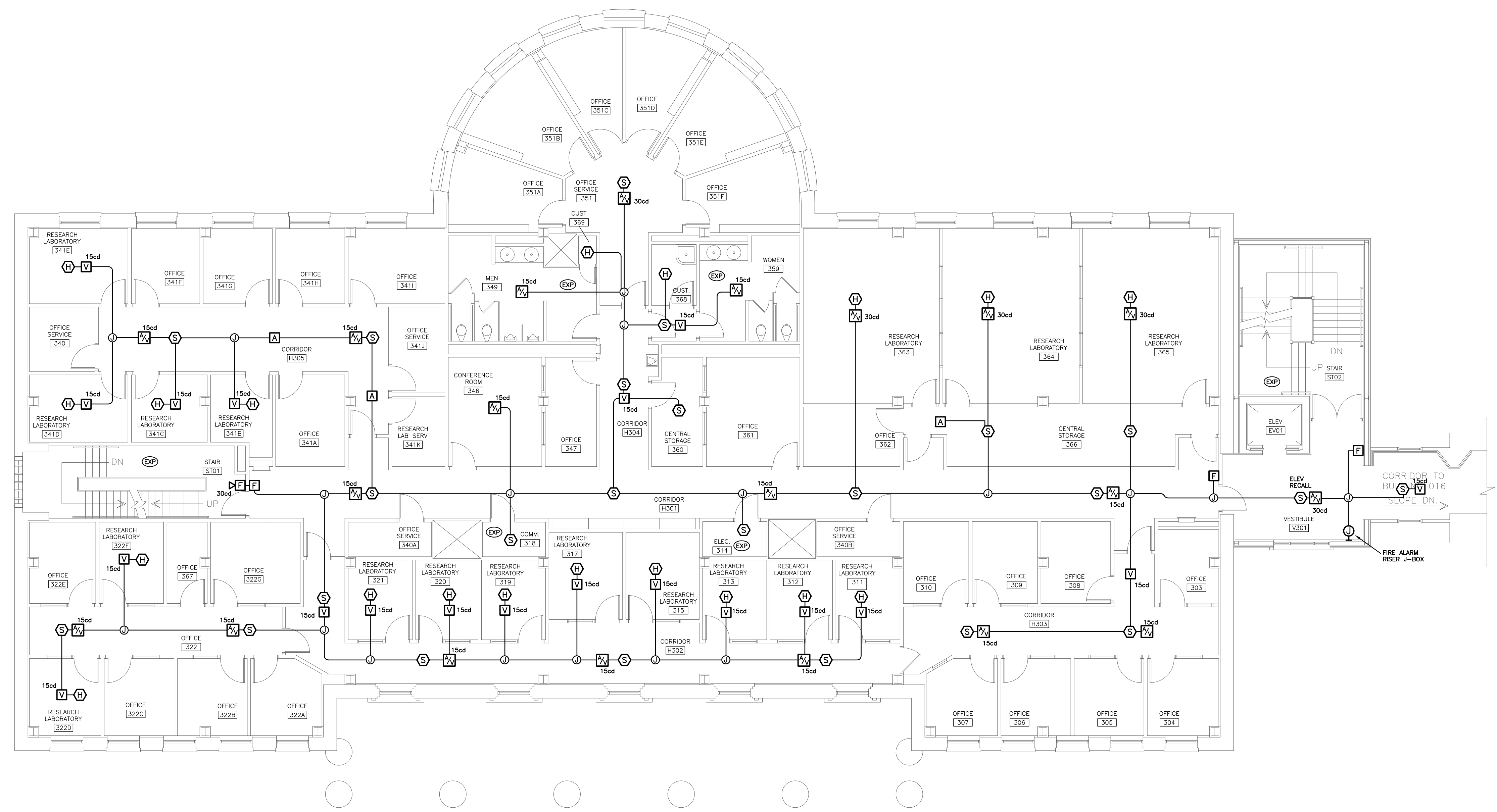
BEA BELKA ENGINEERING ASSOCIATES, INC.
7 CLUSTERS COURT, SUITE 201
COLUMBIA, SOUTH CAROLINA 29210
(803) 731-0650 fax (803) 731-2880
EMAIL: cestringfield@bellsouth.net





FIRE ALARM DEMOLITION NOTE

EXISTING FIRE ALARM SYSTEM SHALL REMAIN OPERATIONAL UNTIL NEW FIRE ALARM SYSTEM HAS BEEN INSTALLED, COMMISSIONED, AND INSPECTED. PROVIDE TEMPORARY COVERS ON ALL NEW MANUAL PULL STATIONS UNTIL NEW SYSTEM IS PUT ON LINE TO AVOID CONFUSION OF WHICH SYSTEM IS IN OPERATION. ONCE NEW SYSTEM IS OPERATIONAL, REMOVE ALL COMPONENTS OF EXISTING SYSTEM INCLUDING CONTROL PANEL, EXTENDER PANEL, DEVICES, CABLES AND SURFACE DEVICE BOXES/RACEWAYS. CONCEALED CONDUITS CAN BE ABANDONED IN PLACE. PROVIDE BLANK COVERS ON ALL EXISTING UNUSED OPEN BOXES. PAINT COVERS AND WHERE SURFACE RACEWAYS ARE REMOVED TO MATCH FINISHED COLOR OF WALL/CEILING. REMOVE ALL DEMOLISHED MATERIAL FROM CONSTRUCTION SITE.

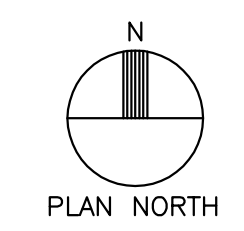


BUILDING:	DRAWING:	DATE:	DRAWN BY:	CHECKED BY:
O18	CP0039502	17AUG15	JLA	JLA
REV:	DESCRIPTION:	DATE:	ORIG. BY:	DRAWN BY:

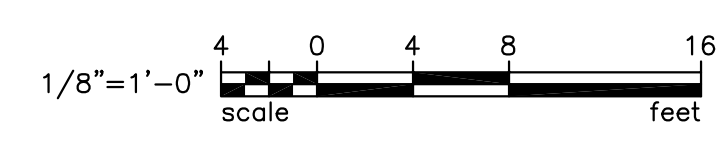
STATE PROJECT NO. H27-1851

PROJECT TITLE: BARNWELL COLLEGE FIRE ALARM

University of South Carolina



1 THIRD FLOOR FIRE ALARM PLAN
SCALE: 1/8" = 1'-0"



EXISTING CEILING TYPE LEGEND

EXP EXPOSED STRUCTURE

GYP GYPSUM BOARD (HARD) CEILING

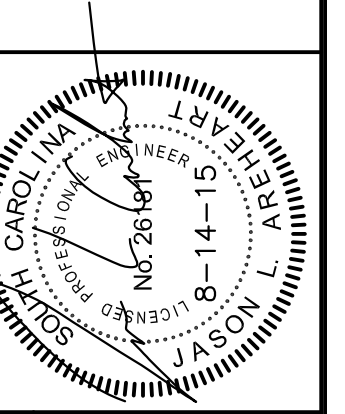
ALL OTHER EXISTING CEILING ARE GRID WITH REMOVABLE ACOUSTICAL TILES.

US21207

BEA BELKA ENGINEERING ASSOCIATES, INC.

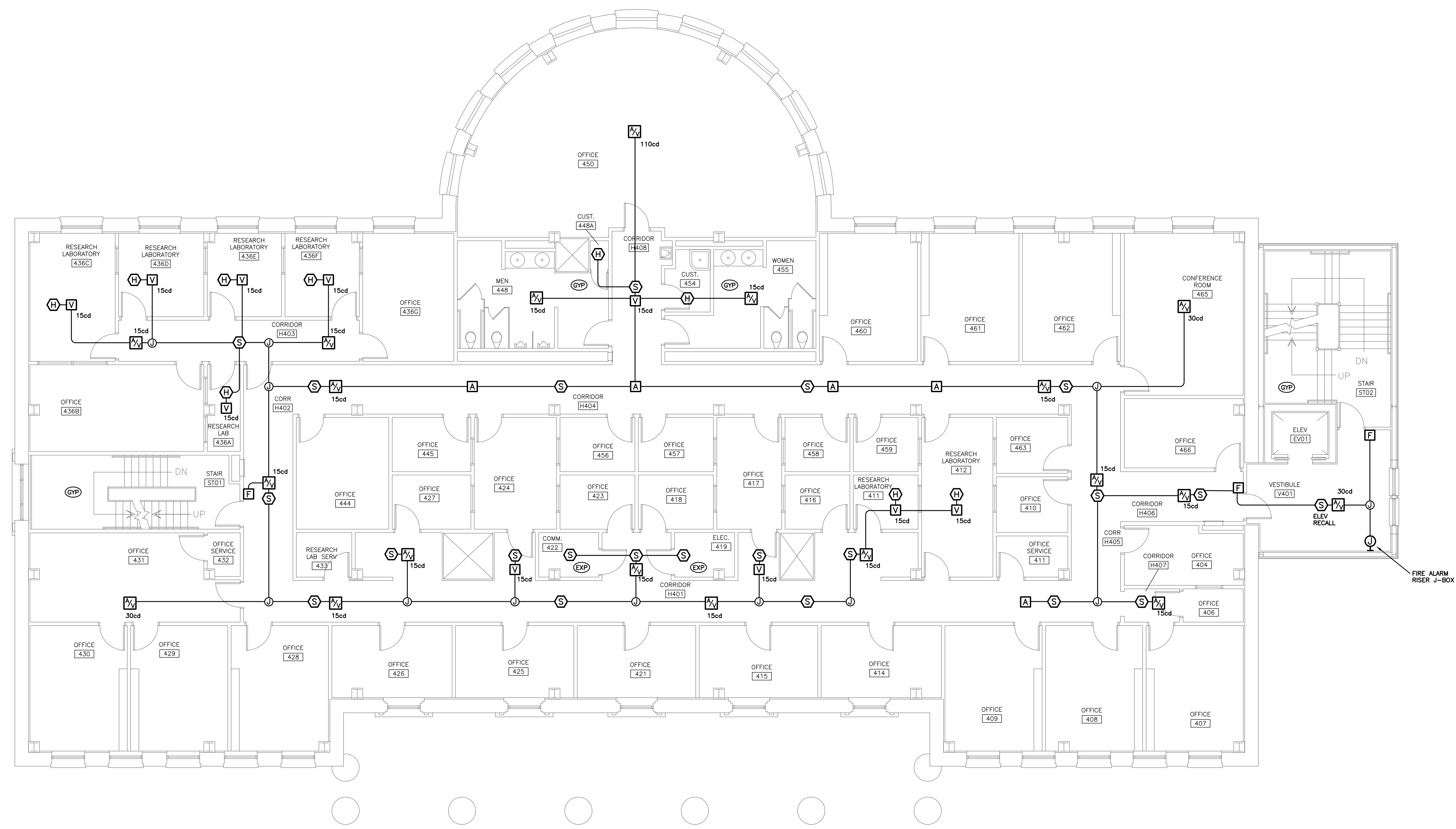
7 CLUSTERS COURT, SUITE 201
COLUMBIA, SOUTH CAROLINA 29210
(803) 731-0650 fax (803) 731-2880
EMAIL: cestringfield@bellsouth.net

SHEET: **E2.3**
6 OF 8
SHEET IN SET:
6 OF 8

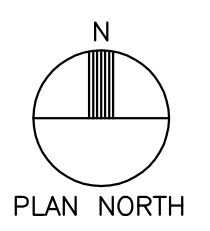


FIRE ALARM DEMOLITION NOTE

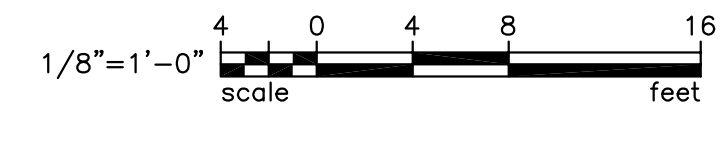
EXISTING FIRE ALARM SYSTEM SHALL REMAIN OPERATIONAL UNTIL NEW FIRE ALARM SYSTEM HAS BEEN INSTALLED, COMMISSIONED, AND INSPECTED. PROVIDE TEMPORARY COVERS ON ALL NEW MANUAL PULL STATIONS UNTIL NEW SYSTEM IS PUT ON LINE TO AVOID CONFUSION OF WHICH SYSTEM IS IN OPERATION. ONCE NEW SYSTEM IS OPERATIONAL, REMOVE ALL COMPONENTS OF EXISTING SYSTEM INCLUDING CONTROL PANEL, EXTENDER PANEL, DEVICES, CABLES AND SURFACE DEVICE BOXES/RACEWAYS. CONCEALED CONDUITS CAN BE ABANDONED IN PLACE. PROVIDE BLANK COVERS ON ALL EXISTING UNUSED OPEN BOXES. PAINT COVERS AND WHERE SURFACE RACEWAYS ARE REMOVED TO MATCH FINISHED COLOR OF WALL/CEILING. REMOVE ALL DEMOLISHED MATERIAL FROM CONSTRUCTION SITE.



BUILDING:	DRAWING:	DATE:	DRAWN BY:	CHECKED BY:
018	CP0039502	17AUG15	ZLS	JLA
REV.	DESCRIPTION	DATE	ORIG.	DRAWN BY



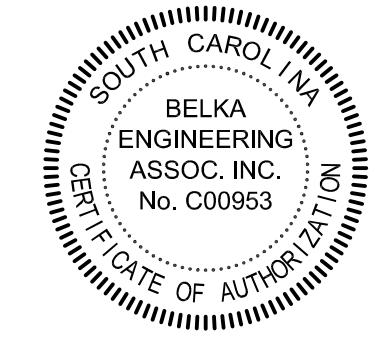
1 FOURTH FLOOR FIRE ALARM PLAN
SCALE: 1/8" = 1'-0"



EXISTING CEILING TYPE LEGEND

	EXPOSED STRUCTURE
	GYPSUM BOARD (HARD) CEILING

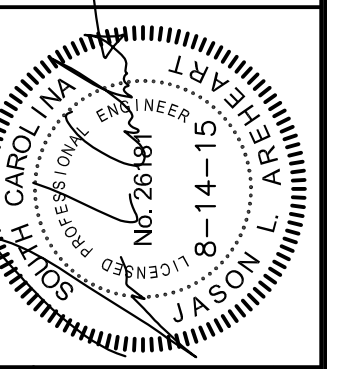
ALL OTHER EXISTING CEILINGS ARE GRID WITH REMOVABLE ACOUSTICAL TILES.



BEA BELKA ENGINEERING ASSOCIATES, INC.
7 CLUSTERS COURT, SUITE 201
COLUMBIA, SOUTH CAROLINA 29210
(803) 731-0650 fax (803) 731-2880
EMAIL: cestringfield@bellsouth.net

STATE PROJECT NO. H27-1851
PROJECT TITLE: BARNWELL COLLEGE FIRE ALARM

University of South Carolina

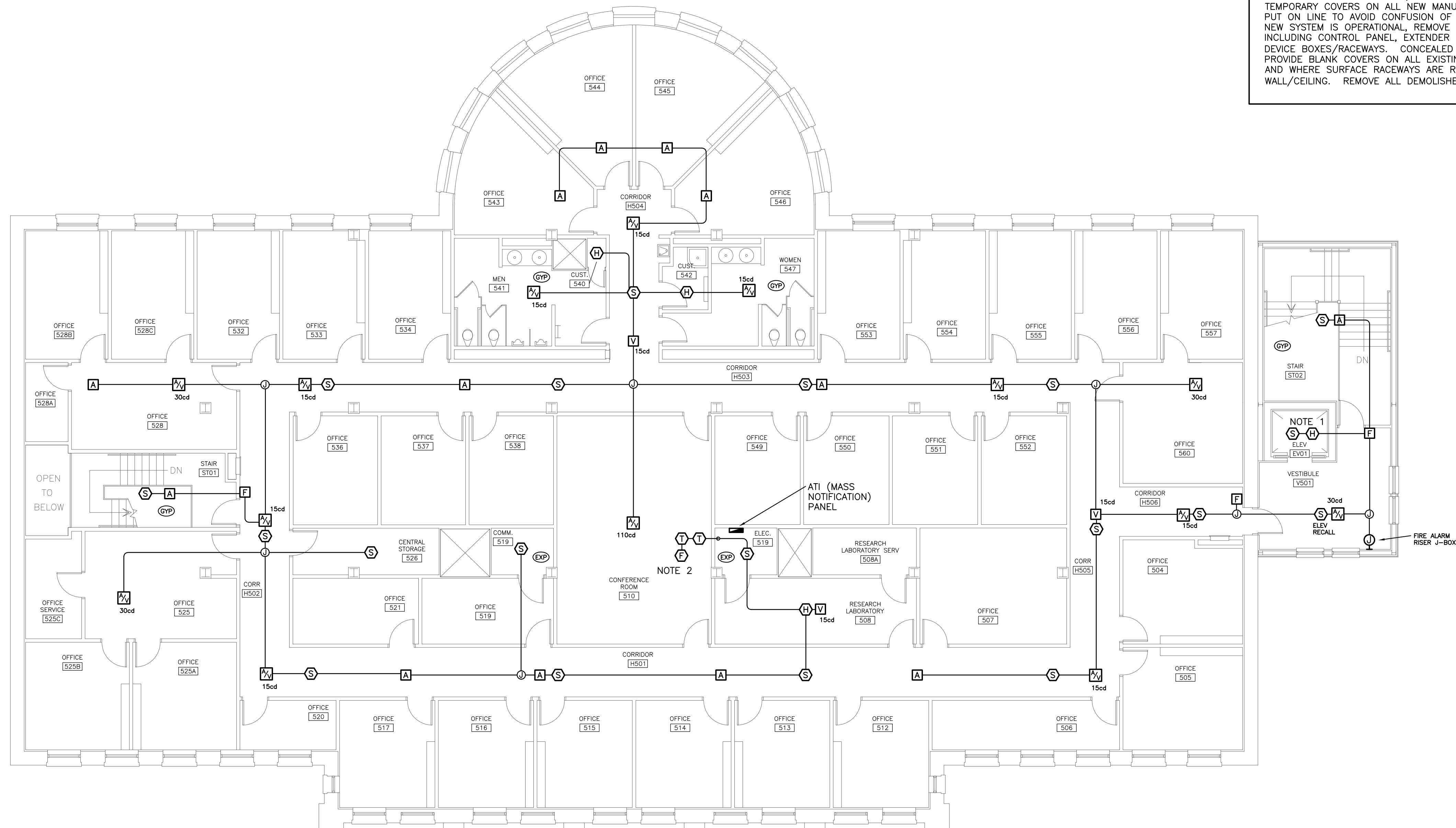


FIRE ALARM NOTES

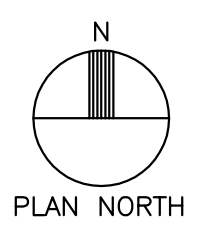
1. PROVIDE ONE HEAT DETECTOR 2'0" FROM EACH SPRINKLER HEAD IN ELEVATOR SHAFT.
2. PROVIDE CONNECTIONS TO EXISTING FLOW AND TAMPER SWITCHES IN ATTIC. COORDINATE QUANTITIES AND LOCATIONS WITH EXISTING CONDITIONS.

FIRE ALARM DEMOLITION NOTE

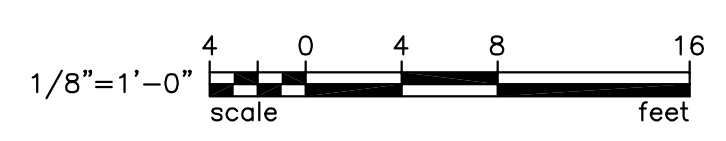
EXISTING FIRE ALARM SYSTEM SHALL REMAIN OPERATIONAL UNTIL NEW FIRE ALARM SYSTEM HAS BEEN INSTALLED, COMMISSIONED, AND INSPECTED. PROVIDE TEMPORARY COVERS ON ALL NEW MANUAL PULL STATIONS UNTIL NEW SYSTEM IS PUT ON LINE TO AVOID CONFUSION OF WHICH SYSTEM IS IN OPERATION. ONCE NEW SYSTEM IS OPERATIONAL, REMOVE ALL COMPONENTS OF EXISTING SYSTEM INCLUDING CONTROL PANEL, EXTENDER PANEL, DEVICES, CABLES AND SURFACE DEVICE BOXES/RACEWAYS. CONCEALED CONDUITS CAN BE ABANDONED IN PLACE. PROVIDE BLANK COVERS ON ALL EXISTING UNUSED OPEN BOXES. PAINT COVERS AND WHERE SURFACE RACEWAYS ARE REMOVED TO MATCH FINISHED COLOR OF WALL/CEILING. REMOVE ALL DEMOLISHED MATERIAL FROM CONSTRUCTION SITE.



BUILDING:	DRAWING:	DATE:	DRAWN BY:	CHECKED BY:
018	CP0039502	17AUG15	ZES	JLA
REV.	DESCRIPTION	DATE	ORIG. BY	DRAWN BY



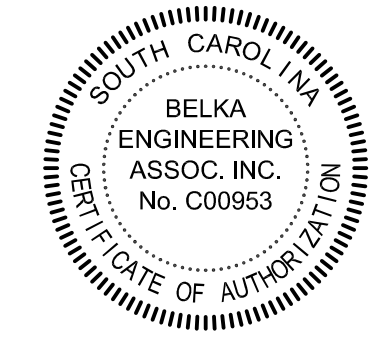
1 FIFTH FLOOR FIRE ALARM PLAN
SCALE: 1/8" = 1'-0"



EXISTING CEILING TYPE LEGEND

(EXP)	EXPOSED STRUCTURE
(GYP)	GYPSUM BOARD (HARD) CEILING

ALL OTHER EXISTING CEILINGS ARE GRID WITH REMOVABLE ACOUSTICAL TILES.



BEA BELKA ENGINEERING ASSOCIATES, INC.
7 CLUSTERS COURT, SUITE 201
COLUMBIA, SOUTH CAROLINA 29210
(803) 731-0650 fax (803) 731-2880
EMAIL: cestringfield@bellsouth.net

STATE PROJECT NO. H27-1851

PROJECT TITLE: BARNWELL COLLEGE FIRE ALARM

University of South Carolina

US21207 SHEET:
E2.5
8 OF 8
SHEET IN SET:
8 OF 8